



Introducing the *Matsuura VX Series*: Cost Effective Heavy Duty Performance

New!



MAXIA Spindle 15,000^{min}-1

The MAXIA Spindle - robust, reliable and accurate
From Aluminium to hard-to-cut materials - the **VX** auto grease spindle offers effortless performance



Compact Drum Magazine



BT40 : 30(Drum magazine)



Option
BT40 : 48/60(Chain magazine)

**Compact 30 station ATC as standard -
48 / 60 chain magazine optionally available**



Spindle-through coolant at 2MPa



Lift-Up Chip Conveyor
(Scraper type, right/left spiral)

Standard
Equipment

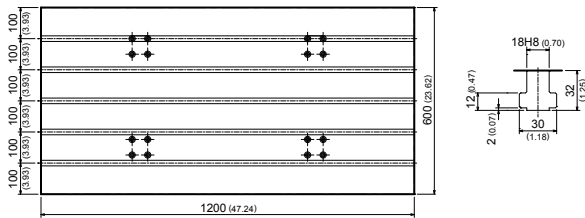
Vertical Machining Center

VX-1000

MAXIA
Innovation by Matsura

VX-1000 Table

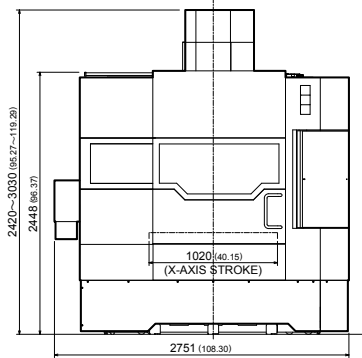
Unit : mm (in.)



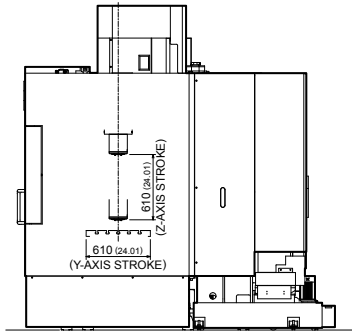
VX-1000 Outline

Unit : mm (in.)

Front View

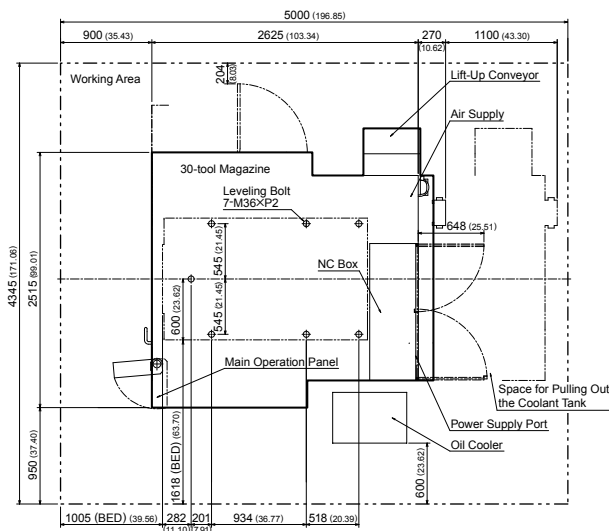


Right Side View



VX-1000 Floor Plan

Unit : mm (in.)



VX-1000 Standard Machine Specifications

■ Movement and Range

X-Axis Travel	mm(in.)	1,020 (40.15)
Y-Axis Travel	mm(in.)	610 (24.01)
Z-Axis Travel	mm(in.)	610 (24.01)

■ Table

Working Surface	mm(in.)	1,200 × 600 (47.24 × 23.62)
Loading Capacity	kg(lb.)	500 (1,100)

■ Spindle

Spindle Speed Range	min ⁻¹	50 - 15,000 (Grease Lubrication)
Spindle Motor Power	kw	15 / 22 (Low : continuous/15min) 15 / 22 (High : continuous/15min)
Max. Spindle Motor Torque	N · m	150 / 1,400min ⁻¹

■ Feedrate

Rapid Traverse Rate (X/Y/Z)	mm/min(ipm)	40,000/40,000/36,000 (1,574.8/1,574.8/1,417.32)
Feedrate (X/Y/Z)	mm/min(ipm)	1 - 20,000 (0.1 - 787.4)

■ Automatic Tool Changer

Type of Tool Shank		JIS B 6339 tool shank 40T
Type of Retention knob		JIS B 6339 pullstud 40P
Tool Storage Capacity	pcs.	30
Max. Tool Diameter	mm(in.)	ø76 (ø2.99) ø125 (ø4.92) (When the Pockets on Both Sides are Empty)
Max. Tool Length	mm(in.)	280 (11.02)
Max. Tool Mass	kg(lb.)	7 (22)

■ Power Sources

Power Capacity	kVA	30 ※ Depending on options
Required Air Volume	MPa	0.54 - 0.93

■ Tank Capacity

Coolant Tank Capacity	L	300
Oil Cooler Tank Capacity	L	36

■ NC System

Control System		FANUC Series 31i
----------------	--	-------------------------

■ Standard Accessories

01. Total Splash Guard	02. ATC Magazine Guard
03. Synchronized Tapping	04. Spindle Oil Cooler
05. Air Blow for Chip Swarf Removal	06. Workpiece Cleaning Gun
07. Coolant Spindle 2MPa	08. Chip Flush
09. Coolant Unit	10. Auto Oil Supply Unit for X/Y/Z
11. Work Light	12. 3 Color Status Light (Red, Yellow, Green)
13. Standard Mechanical Tool and Tool Box	14. Machine Color Paint
15. Levelling Pads and Bolts	16. External Manual Pulse Generator
17. CE Mark Specifications	
18. Lift-Up Conveyor (Scraper Type, Right/Left Spiral)	
19. Spindle Thermal Displacement Compensation 15K BT40 (Temperature Monitor Type)	
20. PC Tool for Memory Card Program Operation and Editing	



URL : <http://www.matsura.co.jp/>
E-MAIL : webmaster@matsura.co.jp

MATSUURA MACHINERY CORPORATION

1-1 Urushihara-cho Fukui City 910-8530 Japan TEL : +81-776-56-8106 FAX : +81-776-56-8151

MATSUURA EUROPE GmbH (www.matsura.de/)

Berta-Cramer-Ring 21 D-65205 Wiesbaden-Delkenheim, Germany TEL : +49-6122-7803-80 FAX : +49-6122-7803-33

MATSUURA MACHINERY Ltd. (www.matsura.co.uk/)

Gee Road, Whitwick Business Park, Leicestershire LE67 4NH, England TEL : +44-1530-511-400 FAX : +44-1530-511-440

MATSUURA MACHINERY GmbH (www.matsura.de/)

Berta-Cramer-Ring 21 D-65205 Wiesbaden-Delkenheim, Germany TEL : +49-6122-7803-0 FAX : +49-6122-7803-33

ELLIOTT MATSUURA CANADA INC. (www.elliottmachinery.com/)

2120 Buckingham Road Oakville Ontario L6H 5X2, Canada TEL : +1-905-829-2211 FAX : +1-905-829-5600

MMTS CORPORATION

65 Union Avenue, Suite2, Sudbury Massachusetts 01776 U.S.A. TEL : +1-978-443-5388 FAX : +1-978-443-9524

* Product specifications and dimensions are subject to change without prior notice. Products are subject to all applicable export control laws and regulations.

OE-E1.0P 201208 1000S