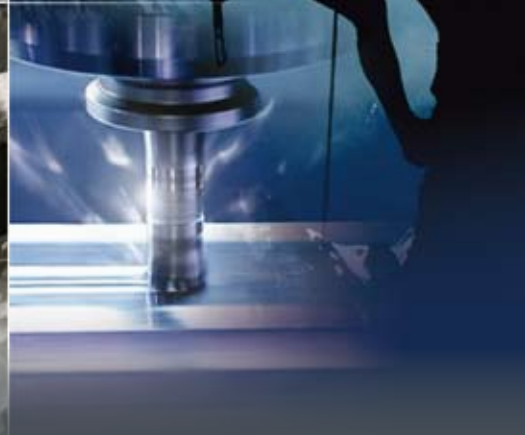
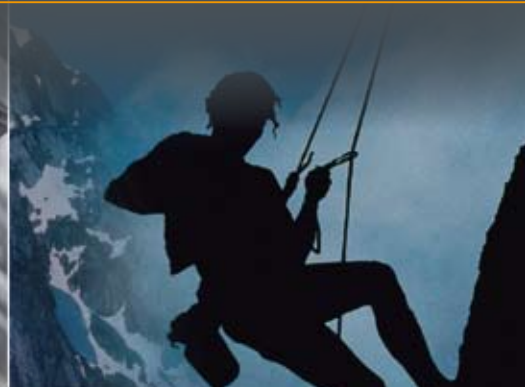
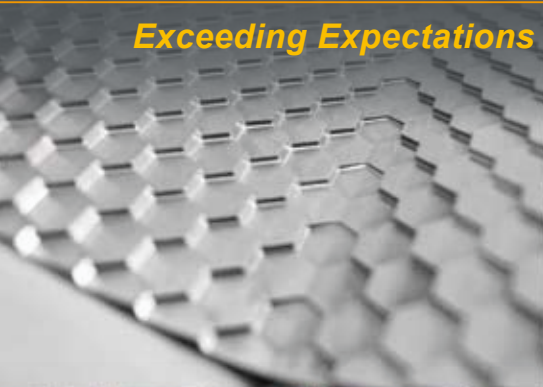


# TOTAL SOLUTION

*Exceeding Expectations at Every Opportunity*





## ***Exceeding Expectations at Every Opportunity***

Since 1954, YCM machine tools have been recognized worldwide for superior precision, outstanding reliability and exceptional rigidity. Today there are more than 70 makes and models fulfilling the industry's diverse requirements.





GPS ■ 24°17'12.3" ■ 120°38'32.1"

Over 164,160 m<sup>2</sup> manufacturing facilities in Taiwan



International sales and service network  
*Serving the world  
since 1954*



■ YCM in-house foundry



■ Comprehensive aging process



■ Assembly factory



■ Flexible manufacturing system



■ Quality control



■ Indoor temperature strictly controlled



■ Research and development



■ Latest advanced research and development technical center





## Company Profile

Year Founded	Since 1954
President	Bryan Chen
Capital Registered	NT\$566,780,000
Factory Area	158,400m <sup>2</sup>
Employees	800
Main Facilities	Foundry, Machining Shop & Assembly Factories
Main Products	Vertical Machining Centers, Double Column Vertical Machining Centers, Horizontal Machining Centers, CNC Lathes
Awards & Certificates	ISO 9001, ISO 14001, CE, MD MIL-I-45208, Symbol of Excellence, etc.

**1954.** YEONG CHIN Iron Works, our forerunner, was founded to manufacture packing machines.

**1973-1975.** Further expanded facility and acquired new production equipment; capital increased to NT\$ 70,000,000; P.C.-Controlled YCM-PU5 produced; market expanded to America, Europe, and South Africa.

**1981.** Phase II construction of the new manufacturing facility completed; acquired DIXI Precision Jig Boring Machine from Switzerland and Three-coordinate measuring machine from England; YCM-VMC-86A bed type machining center successfully developed; IBM System 34 computers installed in the computer Center; Multifunctional Milling awarded symbol of distinction by the National Bureau of Standards.

**1982.** YCM-30 and YCM-60 knee-type milling machines produced; YCM-VMC-60A vertical milling machine began its production; digital controlled knee-type vertical milling machine and knee-type vertical-horizontal milling machine awarded symbol of distinction by the National Bureau of Standards; "Main Spindle Cooling System" patented in Taiwan (# 17572) and in the United States (# 4422498).

**1984.** Received "Outstanding Product Design Award" from China External Trade Development Council, Republic of China; began production and marketing of YCM-VMC-72A machining centers.

**1985-1986.** Received "Outstanding Product Design Award" for NCL-8 from China External Trade Development Council; received "New Product R & D Award" from National Association for Industries.

**1988.** At the First New Products of R&D and Innovation Competition, YCM-4VS received the highest ranking for non-NC milling machine category, YCM-180U received the highest ranking for NC milling machine category, and YCM-180HVA received "Honorable Mention".

**1989.** Received "Outstanding Products of Original Award" in the 1989 Taipei International Machine Tools Show.

**1990.** Received "Honorable Mention" in the Non-NC milling machines category.

**1991.** YCM-79HVA and 90HVAR developed; received the honor of being an "Excellent Company" in the 1991 Taipei International Machine Tools Show; 70HVA developed as a new product; new five-face CNC milling machine and Flexible Manufacturing System(FMS) installed.

**1992.** YCM-180HV received "Superior Award" at the Third Products R&D and Innovation Contest.

**1993.** YCM-90HVAR awarded "Product Excellence" in the National Image Competition; Aviation Department inaugurated; YCM-VMC-1100A successfully developed.





- 1994.** YEONG CHIN became the first machine tools company in Taiwan to pass the ISO-9001 audition conducted by the Bureau of Commodity Inspection & Quarantine, Ministry of Economics, thus assuring international quality standard; with the assistance of PMC, YEONG CHIN applied for CE-MARK.
- 1995.** Received various awards at the Fourth New Product of R&D and Innovation Competition: YCM-VMC-1100A ranked "Superior" for the CNC machine category, YCM-CNC-50 received "Honorable Mention" for the NC milling machines category. YCM-VMC-1100A awarded "Superior Product Design Award" from the China External Trade Development Council, Ministry of Economic Affairs. YCM-V96A awarded "New Product Development Award" by the National Association for Industries. Successfully developed YCM-H800 and V96A.
- 1996.** Developed the YCM-V168A, YCM-TC-26 and launched into production. Started spherical design of sheet-metal covers on the YCM-V168A, V135A Series. Developed the PC-Based PC-NC control and exhibited the prototype at the IMTS '96.
- 1997.** The 1st Yeong Chin Overseas Dealers Conference was held in Taipei, while participated in TIMTOS '97 and announced new developed products, V105A/10000rpm/Gear Box, TC-26 and 70HVA..., etc. Started introducing the Environmental Management System, and leading ahead all the other Taiwanese machine tools builders, awarded ISO 14001 Certificate by TUV Rheinland. Established YCM Technical Center in Malaysia.
- 1998.** Large travel vertical machining center developed. FV56T/12,000rpm prototype and V218B were exhibited at the Taipei Int'l Mold & Die Show, as well as at IMTS '98. New assembly shop was under constructing. Launched official website to start connecting the world with internet.
- 1999.** High Speed, High Power serial vertical machining centers developed, FV56T, FV56A, FV85A and FV102A with unique Isolated Direct Drive(IDD)spindle. Developed and announced the TCR-26 CNC turning center with C-axis and milling tools turret, TC-36W, H500A with B axis, HV2610B, V105A with 20,000rpm motorized spindle. All these machines were exhibited at TIMTOS '99. The 2nd Yeong Chin Overseas Dealers Conference was held at Taichung, while the new assembly shop was inaugurated just before the TIMTOS. Participated in EMO '99-Paris, V146B, FV85A, FV56A/APC TC-26L, TC-36 and H500A with B-axis were exhibited. Founder, Mr. C. S. Chen passed away of heart attack, Mr. J. H. Chen succeeded Chairman.
- 2000.** Largely deployed high speed motorized spindle up to 30,000rpm on the FV series high speed high power machining centers, which helps step into a Total Solution era for mold & die industries and machining applications. H500B with BT50 IDD spindle of 10,000rpm was developed and launched to production. The FP series High Speed Gantry Type machining centers were developed, prototypes - FV100A and FP120A exhibited at the Taipei Int'l Mold & Die Show and IMTS respectively.
- 2001.** New developed products, FP100A, V158B and FV56A/T awarded "Certificate of Excellence", and "Good Design Product", V105A, H500A, FV56A/T, FP100A. High Speed Travel Column vertical machining center - TCV41A and Powerful High Performance turning center TCR25A developed, and made their worldwide debut at the EMO '01.
- 2002.** YCM Technical Center was fully facilitated in house, and the first YEONG CHIN Solution Day event was held successfully in early March; then, the newly developed V106A vertical machining center, AI NANO HPCC on the FP100A with FANUC 18i-M and other High Speed advanced mold & die machining functions were announced.
- 2003.** Start renewal project of manufacturing facilities. Re-define and integrate the updated products lineup, and complete new products development; FP66A, MV66A, MV76A, TCV51A, and RV105A are officially introduced to the market, and exhibited in the TIMTOS 2003, and the relevant international exhibitions.
- 2004.** Launch campaign to celebrate the 50th anniversary with new vision, mottoes, and a series of events.
- 2005.** Launched new GT series CNC lathe, and High Speed High Precision mold & die vertical machining center FP55A with advanced linear motor drive technology, together with new version machining solution package, i-OPERATION plus; exhibited in TIMTOS '05, and relevant international show fairs. FP55A received "Award of Excellence" of NC machine tool category in TIMTOS '05 "Innovative R&D Products Forum".
- 2006.** Officially launched DCV Series of large size double column machining centers and exhibited at relevant international shows. Participating the JIMTOF '06 held in Tokyo. Launched new edition of internet services, URL <http://www.YCMCNC.com>.
- 2007.** The brand new High Speed, High Precision horizontal machining center, H630B, equipped the Dual Drive Technology made its great debut in EMO '07. Meanwhile, the new developed products, NSV66A, NT-2000SY, FX350A are also officially introduced to the Int'l market. YCM Engineer Center was facilitated in house to integrate resources of R&D, after service, and manufacturing.
- 2008.** YCM keeps making progress by going through YCMPS. In 2008, YCM honorably got two patents, "Three-In-One Assembly Wagon" and "Dust Collector for Modeling Machine."
- 2009.** YCM happily celebrated her 55th anniversary with the opening of her solar energy powered Corporate Building.
- 2010.** As part of YCM's globalization path, YCM opened YCM Americas, Inc. in the United States to further improve customer satisfaction and provide better support to customers throughout the North America, Central America and South America.
- 2011.** YCM achieved the qualification and was awarded 「TPM (Total Productive Management) Excellence, Category A」 certified by the JIPM (Japan Institute of Plant Maintenance), the very first Taiwan machine tool manufacturer to ever receive such an award. Assembly Plant III construction completed. Hosted the 2011 M-Team 2nd Annual Achievement Conference.
- 2012.** Hosted "Open House" YCM factory tour at YCM Headquarters to display new technologies.
- 2013.** Hosted YCM Dealer Meeting in America to provide U.S. agents with a platform for services and information exchange.
- Foundry Expansion Project.



# Vertical Machining Centers

## Horizontal Machining Center

### Vertical - Horizontal Machining Center

#### 6 Vertical Machining Centers

**XV/NXV Series**  
XV560A, XV1250A, NXV1020A/AM, NXV1680A

**7 FP Series**  
FP55LX, FP66A, FP100A

**8 FV Series**  
FV56T, FV56A, FV125A/FV50T

**9 NTV Series**  
NTV 158A, NTV 158B

**TV Series**  
TV116B, TV146A/B,  
TV158A/B, TV188B, TV2110B, TV2610B

**11 MV/NMV Series**  
MV66A, MV76A, NMV106A

**12 NSV Series**  
NSV66A, NSV85A, NSV102A, NSV156A

**NDV Series**  
NDV66A, NDV85A, NDV102A

**13 WV Series**  
WV108A/B

**TCV Series**  
TCV2000A, TCV3000A-5AF/5AX



#### 14 5-Axis Vertical Machining Centers

**FX Series**  
FX380A

#### 14 Double Column Vertical Machining Centers

**NDC Series**  
NDC2016B, DCV3016B, DCV4016B,  
DCV3018B-AHC

**15 DCV Series**  
DCV2012A/B, DCV3016B, DCV4016B,  
DCV3021B, DCV4021B, DCV3025B,  
DCV4025B, DCV4035B, DCV4035B-5AX

#### 16 Horizontal Machining Centers

**NH/H Series**  
NH450A, NH800B, H500A/B,  
H630B, H800B, H2612B

#### Horizontal Boring Milling Machining Center

**BMP Series**  
BMP1416B



#### 17 CNC Lathes

**NT Series**  
NT-2000Y/SY, NT-2500Y/SY

**18 TC Series**  
TC-16A/B/LA/LB, TC-26, TC-26L, TC-36, TC-36W,  
TC-46/M

**19 GT Series**  
GT-200A/B/MA, GT-250A/B/MA,  
GT-300A/B/MA/LB, GT-380A/B/LA/LB



# Vertical Machining Centers

• **XV/ NXV Series**



**XV 560A**



**NXV 1020A/AM**



**XV 1250A**



**NXV 1680A**

	XV560A	XV1250A	NXV1020A	NXV1020AM	NXV1680A
Table Size	700 x 420mm 27.6" x 16.5"	1350 x 520mm 53.1" x 20.5"	1,120 x 520mm 44.1" x 20.5"		1,730 x 760mm 68.1" x 29.9"
X-axis Travel	560mm 22.0"	1270mm 50.0"	1,020mm 40.2"		1,630mm 64.2"
Y-axis Travel	410mm 16.1"	520mm 20.5"	520mm 20.5"		762mm 30"
Z-axis Travel	450mm 17.7"	540mm 21.3"	540mm 21.3"		700mm 27.6"
Spindle Speed	10,000 rpm		12,000 rpm (15,000 rpm)		
Spindle Taper	BBT40				
Max. Spindle Power (opt.)	11kW 15HP	11kW (22kW) 15HP (30HP)	18.5kW (18.5kW)		18.5kW (30kW) 25HP (40HP)
Tool Magazine Capacity (opt.)	20T	24T (30T)	24T (30/40/60T)		24T (30T)
Machine Weight	3,000kg 6,614 lb	6,700kg 14,770 lb	5,350kg 11,795 lb		11,000kg 24,251 lb

1. The manufacturer reserves the right to modify the design, specifications, mechanisms, etc. to improve the performance of the machine without notice. All the specifications shown above are just for reference.  
2. The appearance of the machines will be diverse due to different model and selectivity of accessories.

# Vertical Machining Centers

## • FP Series



**FP55LX**



**FP66A**



**FP100A**

	FP55LX	FP66A	FP100A
Table Size (APC)	700 x 510mm 27.56" x 20.08"	800 x 510mm 31.5" x 20.08"	1,200 x 700mm 47.24" x 27.56"
X-axis Travel	510mm 20.08"	660mm 25.98"	1,020mm 40.16"
Y-axis Travel	510mm 20.08"	510mm 20.08"	710mm 27.95"
Z-axis Travel	260mm 10.24"	400mm 15.75"	460mm 18.11"
Spindle Speed (opt.)	30,000rpm	16,000rpm (20,000/30,000rpm)	16,000rpm (20,000rpm)
Spindle Taper	BBT30	BBT40 (BBT40/BBT30)	BBT40
Max. Spindle Power (opt.)	11kW 15HP	22kW (22/11kW) 30HP (30/15HP)	22kW 30HP
Tool Magazine Capacity (opt.)	16T	24T	
Machine Weight (APC)	9,000kg 19,841 lb	8,000kg 17,637 lb	10,500kg 23,148 lb



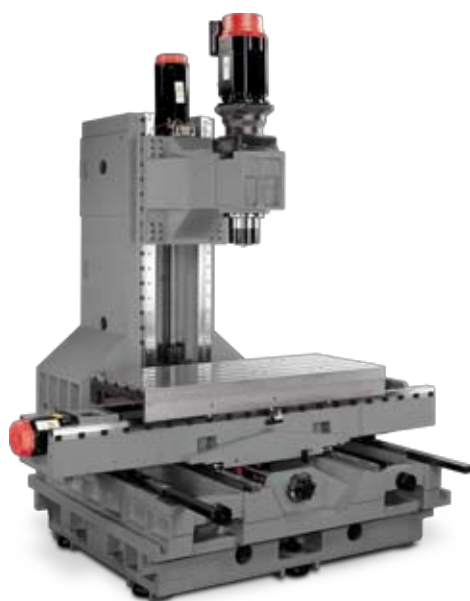
• **FV Series**



**FV56T/A**  
(opt. APC)



**FV50T**



**FV125A**



	FV50T	FV56T	FV56A	FV125A
Table Size (APC)	650 x 400mm 25.59" x 15.75"	700 x 420mm (560 x 410mm) 27.56" x 16.53" (22.04" x 16.14")		1,350 x 520mm 53.15" x 20.47"
X-axis Travel	500mm 19.69"	560mm 22.05"		1,270mm 50"
Y-axis Travel	400mm 15.75"	410mm 16.14"		520mm 20.47"
Z-axis Travel	300mm 11.81"	450mm 17.72"		540mm 21.26"
Spindle Speed (opt.)	10,000rpm (15,000rpm)	15,000rpm	10,000rpm (12,000/15,000rpm)	
Spindle Taper	BT30		BBT40	
Max. Spindle Power (opt.)	5.5kW (3.7kW) 7.4HP	3.7kW 5HP	15kW 20HP	15kW 20HP
Tool Magazine Capacity (opt.)	16T (21T)	16T (20T)	20T	24T (30T)
Machine Weight (APC)	2,400kg 5,280 lb	2,800kg (3,630kg) 6,173 lb (8,003 lb)	3,000kg (3,850kg) 6,614 lb (8,488 lb)	6,700kg 14771 lb

1. The manufacturer reserves the right to modify the design, specifications, mechanisms, etc. to improve the performance of the machine without notice. All the specifications shown above are just for reference.  
2. The appearance of the machines will be diverse due to different model and selectivity of accessories.

# Vertical Machining Centers

• NTV Series • TV Series



NTV158A/B



TV116B (opt. APC)

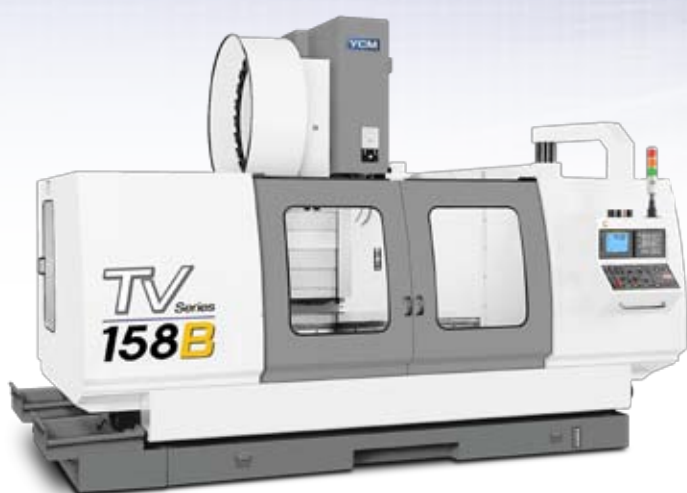


TV146A

	NTV158A	NTV158B	TV146A	TV146B	TV116B
Table Size (APC)	1,650 × 760mm 64.96" x 29.92"		1,500 x 600mm 59.06" x 23.62"		1,200 x 600mm (1,200 x 560mm) 47.24" x 23.62" (47.24" x 22.05")
X-axis Travel	1,530mm 60.24"		1,400mm 55.12"		1,100mm 43.31"
Y-axis Travel	762mm 30"		620mm 24.41"		600mm 23.62"
Z-axis Travel	700mm 27.56"		630mm 24.8"		
Spindle Speed (opt.)	10,000rpm (12,000/15,000rpm)	10,000rpm (15,000rpm)	8,000rpm (10,000rpm)	6,000rpm (10,000rpm)	
Spindle Taper	BBT40	BBT50 (HSK A100)	BT40	BT50 (BBT50)	
Max. Spindle Power (opt.)	15kW (22kW) 20HP (30HP)	22kW (30kW) 30HP (40HP)	11kW (15kW) 15HP (20HP)	18.5kW (22kW) 25HP (30HP)	
Tool Magazine Capacity (opt.)	24T (30/48T)	24T (32/40T)	20T (24/30T)	24T (32/40T)	
Machine Weight (APC)	14,170kg 31,239 lb	15,500kg 34,171 lb	12,000kg 26,455 lb	12,300kg 27,117 lb	11,200kg (12,050kg) 24,692 lb (26,565 lb)



• TV Series



**TV158A/B**



**TV188B**



**TV2110B/2610B**

	TV158B	TV188B	TV2110B	TV2610B
Table Size	1,700 x 860mm 66.93" x 33.86"	2,000 x 860mm 78.74" x 33.86"	2,300 x 1,020mm 90.55" x 40.16"	2,800 x 1,020mm 110.24" x 40.16"
X-axis Travel	1,500mm 59.06"	1,800mm 70.87"	2,100mm 82.68"	2,600mm 102.36"
Y-axis Travel	860mm 33.86"		1,020mm 40.16"	
Z-axis Travel	750mm 29.53"		762mm 30"	
Spindle Speed (opt.)	6,000rpm (10,000rpm)			
Spindle Taper	BT50(BBT50)			
Max. Spindle Power (opt.)	18.5kW (22kW) 25HP (30HP)		22kW 30HP	
Tool Magazine Capacity (opt.)	24T (32/40T)			
Machine Weight	18,000kg 39,683 lb	20,500kg 45,194 lb	25,500kg 56,217 lb	26,000kg 57,320 lb

1. The manufacturer reserves the right to modify the design, specifications, mechanisms, etc. to improve the performance of the machine without notice. All the specifications shown above are just for reference.  
2. The appearance of the machines will be diverse due to different model and selectivity of accessories.

# Vertical Machining Centers

• MV / NMV Series



**MV66A**



**MV76A**



**NMV106A**



	MV66A	MV76A	NMV106A
Table Size	840 x 560mm 33.07" x 22.05"	915 x 560mm 36.02" x 22.05"	1,120 x 600mm 44.09" x 23.62"
X-axis Travel	660mm 25.98"	762mm 30"	1,020mm 40.16"
Y-axis Travel	510mm 20.08"		600mm 23.62"
Z-axis Travel	560mm 22.05"		600mm 23.62"
Spindle Speed (opt.)	8,000rpm (10,000rpm)		12,000rpm (8,000rpm/10,000rpm)
Spindle Taper	BT40		BBT40
Max. Spindle Power (opt.)	11kW (15kW) 15HP (20HP)		18.5kW (15/15kW) 15HP (20/20HP)
Tool Magazine Capacity (opt.)	24T (20/30T)		24T (30/40/60T)
Machine Weight	5,000kg 11,023 lb	5,100kg 11,243 lb	6,500kg 14,330 lb



• **NSV Series** • **NDV Series**



**NSV102A**



**NDV66A/NDV85A/NDV102A**



**NSV156A**

	<b>NSV66A</b>	<b>NSV85A</b>	<b>NSV102A</b>	<b>NSV156A</b>	<b>NDV66A</b>	<b>NDV85A</b>	<b>NDV102A</b>
Table Size	840 x 560mm 33.07 x 22.05"	1,000 x 650mm 39.37 x 25.59"	1,120 x 650mm 44.09 x 25.59"	1,630 x 650mm 64.17 x 25.59"	840 x 560mm 33.07 x 22.05"	1,000 x 650mm 39.37 x 25.59"	1,120 x 650mm 44.09 x 25.59"
X-axis Travel	660mm 25.98"	850mm 33.46"	1,020mm 40.16"	1,530 60.24"	660mm 25.98"	850mm 33.46"	1,020mm 40.16"
Y-axis Travel	510mm 20.08"	600mm 23.62"		650 25.59"	510mm 20.08"	600mm 23.62"	
Z-axis Travel	560mm 22.05"	600mm 23.62"		610 24.02"	560mm 22.05"	600mm 23.62"	
Spindle Speed (opt.)	12,000rpm (15,000rpm)				12,000rpm (15,000/20,000rpm)		
Spindle Taper	BBT40				BBT40		
Max. Spindle Power (opt.)	22kW 30HP				15kW (11/22kW) 20HP (15/30HP)		
Tool Magazine Capacity (opt.)	30T (40T)	30T (48/60T)			30T		
Machine Weight	6,500kg 14,330 lb	6,800kg 14,991 lb	7,000kg 15,432 lb	10,000kg 22,046 lb	6,500kg 14,330 lb	6,800kg 14,991 lb	7,000kg 15,432 lb

1. The manufacturer reserves the right to modify the design, specifications, mechanisms, etc. to improve the performance of the machine without notice. All the specifications shown above are just for reference.  
2. The appearance of the machines will be diverse due to different model and selectivity of accessories.

# Vertical Machining Centers

● **WV Series** ● **TCV Series**



**WV108A/B**



**TCV2000A**



- $\pm 110^\circ$  Swivel angle (B-axis)
- $\varnothing 800\text{mm}$  Table Size (C-axis)
- 1,200kg Max. Load on Table (C-axis)
- 33.3/100rpm Max. speed (B/C axis)

**TCV3000A-5AX / 5AF**

	WV108A	WV108B	TCV2000A	TCV3000A-5AX/5AF
Table Size	1,300 x 820mm <b>51.18" x 32.28"</b>		2,500 x 520mm <b>98.43" x 20.47"</b>	3,500 x 800mm <b>137.8" x 31.5"</b>
X-axis Travel	1,120mm <b>44.09"</b>		2,000mm <b>78.74"</b>	3,000mm <b>118.11"</b>
Y-axis Travel	762mm <b>30"</b>		520mm <b>20.47"</b>	800mm <b>31.5"</b>
Z-axis Travel	700mm <b>27.56"</b>		540mm <b>21.26"</b>	800mm <b>31.5"</b> (V)
Spindle Speed (opt.)	12,000rpm (15,000rpm)		12,000rpm (15,000rpm)	
Spindle Taper (opt.)	BBT40		BBT40	
Max. Spindle Power (opt.)	15kW (22kW) <b>20HP (30HP)</b>		22kW (18.5kW) <b>30HP (25HP)</b>	
Tool Magazine Capacity (opt.)	24T (30T)		30T (40T)	40T (80T)
Machine Weight	11,000kg <b>24,251 lb</b>	13,000kg <b>28,660 lb</b>	13,300kg <b>29,321 lb</b>	24,700kg <b>54,454 lb</b>



• **FX Series**



**FX380A**

<b>FX380A</b>	
Table Size/T Slots	ø380/12mm ø14.96"/0.47"
X-axis Travel	700mm 27.56"
Y-axis Travel	520mm 20.47"
Z-axis Travel	480mm 18.9"
A-axis (Tilt)	150° (+30°/-120°)
C-axis (Rotary)	360°
A/C-axis Feed Rate	33.3rev/min.
A/C Positioning Accuracy	28sec./28sec.
A/C Repeatability Accuracy	16sec./16sec.
Spindle Speed (opt.)	12,000rpm (15,000rpm)
Spindle Taper	BBT40
Max. Spindle Power (opt.)	22.5kW 30HP
Tool Magazine Capacity	30T (40/60T)
Machine Weight	6,210kg 13,691 lb

1. The manufacturer reserves the right to modify the design, specifications, mechanisms, etc. to improve the performance of the machine without notice. All the specifications shown above are just for reference.  
2. The appearance of the machines will be diverse due to different model and selectivity of accessories.

# Double Column Vertical Machining Center

• **NDC Series**



**NDC 3016B**



**NDC 3018B-AHC**

	<b>NDC 2016B</b>	<b>NDC 3016B</b>	<b>NDC 4016B</b>	<b>NDC 3018B-AHC</b>
Table Size	2,000 x 1,500mm 78.74" x 59.06"	3,000 x 1,500mm 118.11" x 59.06"	4,000 x 1,500mm 157.48" x 59.06"	3,000 x 1,500mm 118.11" x 59.06"
X-axis Travel	2,200mm 86.61"	3,200mm 125.98"	4,200mm 165.35"	3,200mm 125.98"
Y-axis Travel	1,600mm 62.99"			2,200mm 86.61"
Z-axis Travel	762mm 30"			
Spindle Speed (opt.)	6,000rpm (10,000rpm)			V: 6,000rpm / H: 4,000rpm
Spindle Taper	BBT50			
Max. Spindle Power	26kW (22kW) 35HP (30HP)			26kW 35HP
Tool Magazine Capacity (opt.)	32T (40/60T)			40T (60T)
Machine Weight	23,000kg 50,706 lb	26,000kg 57,320 lb	29,000kg 63,933 lb	29,000kg 63,933 lb

1. The manufacturer reserves the right to modify the design, specifications, mechanisms, etc. to improve the performance of the machine without notice. All the specifications shown above are just for reference.  
2. The appearance of the machines will be diverse due to different model and selectivity of accessories.

# Double Column Vertical Machining Center

• DCV Series



**DCV2012A/B**



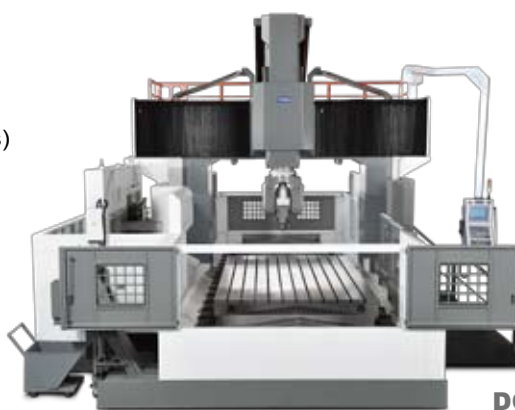
**DCV3016B**

	DCV2012 <b>A</b>	DCV2012 <b>B</b>	DCV3016 <b>B</b>	DCV4016 <b>B</b>	DCV3021 <b>B</b>
Table Size	2,000 x 1,100mm <b>78.74" x 43.31"</b>		3,260 x 1,500mm <b>128.35" x 59.06"</b>	4,260 x 1,500mm <b>167.72" x 59.06"</b>	3,100 x 2,000mm <b>122.1" x 78.7"</b>
X-axis Travel	2,000mm <b>78.74"</b>		3,060mm <b>120.47"</b>	4,065mm <b>160.04"</b>	3,060mm <b>78.74"</b>
Y-axis Travel	1,200mm <b>47.24"</b>		1,600mm <b>62.99"</b>		2,100mm <b>82.68"</b>
Z-axis Travel (opt.)	600mm <b>23.6"</b>	762mm <b>30"</b>	762mm (1,016mm) <b>30"(40")</b>		
Spindle Speed (opt.)	20,000rpm	10,000rpm	4,500rpm (6,000/10,000rpm)		
Spindle Taper (opt.)	BBT40		BBT50		
Max. Spindle Power			22kW <b>30HP</b>		
Tool Magazine Capacity (opt.)	24T (30T)	32T (40T)	40T (60T)		40T (60/120T)
Machine Weight	16,000kg <b>35,242 lb</b>	21,000kg <b>46,255 lb</b>	31,000kg <b>68,280 lb</b>	35,000kg <b>77,092 lb</b>	43,000kg <b>94,798 lb</b>



**±110°/360°**  
Swivel/Rotary angle (B/C axis)

**300°/sec.**  
Max. swivel/rotary speed



**DCV4035B-5AX**

	DCV4021 <b>B</b>	DCV3025 <b>B</b>	DCV4025 <b>B</b>	DCV4035 <b>B</b>	DCV4030 <b>B</b> -5AX
Table Size	4,100 x 2,000mm 161.4" x 78.7"	3,100 x 2,400mm 122.1" x 94.5"	4,100 x 2,400mm 161.4" x 94.5"	4,100 x 2,400mm 161.4" x 94.5"	4,100 x 2,400mm 161.4" x 94.5"
X-axis Travel	4,065mm 160.04"	3,060mm 120.47"	4,065mm 160.04"		
Y-axis Travel	2,100mm 82.68"	2,500mm 98.43"		3,500mm 137.8"	
Z-axis Travel (opt.)	762mm 30" (1,016mm 40")				1,016mm 40"
Spindle Speed (opt.)	4,500rpm (6,000/10,000rpm)				10,000rpm
Spindle Taper (opt.)	BT50				HSK A100
Max. Spindle Power	22kW 30HP				46kW 61.7HP
Tool Magazine Capacity (opt.)	40T (60/120T)				
Machine Weight	47,000kg 103,616 lb	45,000kg 99,207 lb	49,000kg 108,025 lb	55,000kg 121,253 lb	58,000kg 127,867 lb



# Horizontal Machining Center

• **NH Series** • **H Series**



**NH 450A**



**H 500A / B**

	<b>NH450A</b>	<b>NH800B</b>	<b>H500A</b>	<b>H500B</b>	<b>H630B</b>	<b>H800B</b>	<b>H2612B</b>
Table Size	400 x 400mm (500 x 500mm) 15.75" x 15.75" (19.69" x 19.69")	800 x 800mm 31.5" x 31.5"	500 x 500mm 19.69" x 19.69"		630 x 630mm 24.8" x 24.8"	800 x 800mm 31.5" x 31.5"	2,800 x 1,400mm 110.24" x 55.12"
X-axis Travel	640mm 25.2"	1,300mm 51.18"	650mm 25.59"	700mm 27.56"	1,050mm 41.34"	1,300mm 51.18"	2,600mm 102.36"
Y-axis Travel	610mm 24.02"	1,100mm 43.31"	650mm 25.59"		850mm 33.46"	1,050mm 41.34"	1,200mm 47.24"
Z-axis Travel	680mm 26.77"	1,100mm 43.31"	650mm 25.59"		850mm 33.46"	1,150mm 45.28"	1,200mm 47.24"
Spindle Speed (opt.)	15,000rpm	10,000rpm (8,000rpm)	8,000rpm (10,000rpm)	6,000rpm (10,000rpm)	10,000rpm		4,500rpm
Spindle Taper	BBT40 (CAT40)	BBT50	BT40	BT50	BBT50		BT50
Max. Spindle Power	22kW 30HP	45kW (55kW) 60HP (74HP)	15kW 20HP	22kW 30HP	30kW 40HP		18.5kW 25HP
Tool Magazine Capacity (opt.)	40T (60T)	40T (60/120T)	40T (60T)	40T (60/80T)	40T (60/120T)		40T (60/80T)
Machine Weight	10,945kg 24,129 lb	26,000kg 57,320 lb	15,700kg 34,612 lb	17,650kg 38,911 lb	22,500kg 49,604 lb	26,560kg 58,554 lb	27,000kg 59,524 lb

# Horizontal Boring Milling Machining Center

• **BMP Series**



	<b>BMP1416B</b>
Table Size	1,400 x 1,600mm 55" x 63"
Table Index	45° (0.001°)
X-axis Travel	2,000mm 78.7"
Y-axis Travel	1,500mm 59.1"
Z-axis Travel	1,500mm 59.1"
W-axis Travel	500mm 19.7"
Spindle Speed (opt.)	2,500rpm (3,000rpm)
Spindle Taper	BBT50
Max. Spindle Power	22kW 30HP
Tool Magazine Capacity	60T
Machine Weight	30,000kg 66,138 lb

# CNC Lathe

• NT Series • TC Series



## NT-2000Y/SY

		NT-2000Y	NT-2000SY	NT-2500Y	NT-2500SY
Swing Over Bed		ø1,000mm ø39.37" (ø700mm ø27.56" interference with cover)			
Swing Over Carriage		ø870mm ø34.25" (ø700mm ø27.56" interference with cover)			
Max. Turning Diameter		ø350mm ø13.78"			
X/Z-axis Travel		260/580mm 10.24"/22.83"		260/780mm 10.24"/30.71"	
Main Spindle	Max. Spindle Power	15kW 20HP		22kW 30HP	
	Spindle Nose	A2-6		A2-8	
	Hole Through (Spindle/draw bar (opt.))	ø77mm/ø52mm (ø66mm) ø3.03"/ø2.05" (ø2.6")		ø91/ø75mm (ø80mm) ø3.58"/ø2.95" (ø3.15")	
	Spindle Speed	4,500rpm		3,500rpm	
Sub Spindle	Max. Spindle Power	-	7.5kW 10.1HP	-	7.5kW 10.1HP
	Spindle Nose	-	A2-5	-	A2-5
	Hole Through (Spindle/draw bar)	-	ø43/ø33mm ø1.69"/ø1.30"	-	ø43/ø33mm ø1.69"/ø1.30"
	Spindle Speed	-	6,000rpm	-	6,000rpm
Tail Stock Quill Diameter		ø90mm ø3.54"	-	ø90mm ø3.54"	-
Tail Stock Quill Taper	Dead Center	MT-4, Fixed Type	-	MT-4, Fixed Type	-
	Live Center (opt.)	MT-3, Rotary Type	-	MT-3, Rotary Type	-
Turret Capacity		12T with BMT 65			
Machine Weight		6,400kg 14,109 lb	6,500kg 14,330 lb	7,350kg 16,203 lb	7,450kg 16,424 lb

	TC-16A	TC-16LA	TC-16B	TC-16LB
Swing Over Bed	ø550mm 21.65"			
Swing Over Carriage	ø320mm 12.6"			
Max. Turning Diameter	ø260mm 10.24"			
X/Z-axis Travel	150/370mm 5.91"/14.57"	150/600mm 5.91"/23.62"	150/370mm 5.91"/14.57"	150/600mm 5.91"/23.62"
Max. Spindle Power	15kW 20HP			
Spindle Nose	A2-5		A2-6	
Hole Through (Spindle/draw bar)	ø62/ø52mm 2.44"/2.05"		ø77/ø66mm 3.03"/2.6"	
Spindle Speed	5,000rpm		4,500rpm	
Tail Stock Quill Taper	MT-4 (TC-16A/B: opt.)			
Tail Stock Quill Diameter	ø75mm 2.95" (TC-16A/B: opt.)			
Turret Capacity	12T		10T	
Machine Weight	3,400kg 7,496 lb	3,700kg 8,157 lb	3,400kg 7,496 lb	3,700kg 8,157 lb

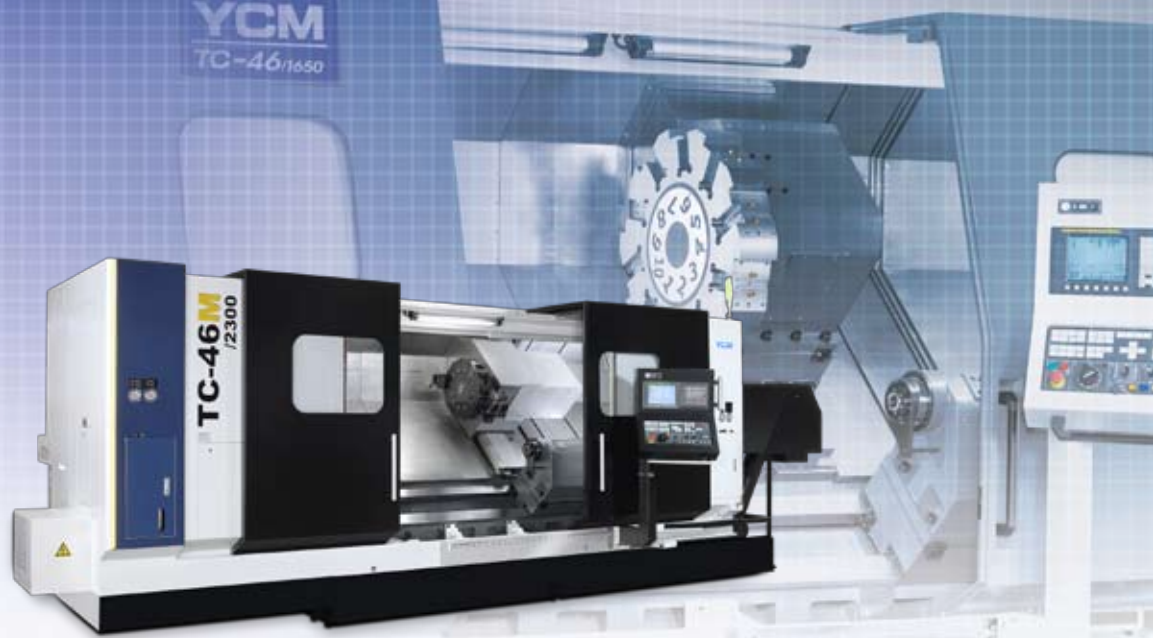


TC-16A/B

- The manufacturer reserves the right to modify the design, specifications, mechanisms, etc. to improve the performance of the machine without notice. All the specifications shown above are just for reference.
- The appearance of the machines will be diverse due to different model and selectivity of accessories.



• TC Series



TC-46M/2300

	TC-46 <sup>1000</sup>	TC-46 <sup>1650</sup>	TC-46 <sup>2300</sup>	TC-46 <sup>3200</sup>	TC-46 <sup>M1000</sup>	TC-46 <sup>M1650</sup>	TC-46 <sup>M2300</sup>	TC-46 <sup>M3200</sup>
Swing Over Bed	ø850mm ø33.5"				ø850mm ø33.5"			
Swing Over Carriage	ø720mm ø28.4"				ø720mm ø28.4"			
Max. Turning Diameter	ø750mm ø29.5"				ø730mm ø28.7"			
X/Z-axis Travel	405/1,000mm 15.94"/39.4"	405/1,650mm 15.94"/65"	405/2,300mm 15.94"/90.6"	405/3,200mm 15.94"/126"	415/1,000mm 16.3"/39.4"	415/1,650mm 16.3"/65"	415/2,300mm 16.3"/90.6"	415/3,200mm 16.3"/126"
Max. Spindle Power	37kW 49.6HP				37kW 49.6HP			
Spindle Nose (opt.)	A2-11 (A2-15, Big Bore)							
Hole Through (opt.) (Spindle/draw bar)	ø130/ø117mm (ø182/ø165mm) ø5.1"/ø4.6" (ø7.2"/ø6.5")							
Spindle Speed (opt.)	2,000rpm (1,200rpm)							
Tail Stock Quill Taper (opt.)	MT-5, Fixed Type (MT-5, Rotary Type)				MT-5, Fixed Type (MT-5, Rotary Type)			
Turret Capacity (opt.)	10T				12T with BMT85			
Max. Live Tool Motor	—				22kW 30HP			
Max. Live Tool Speed	—				3,000rpm			
Machine Weight	12,500kg 27,558 lb	13,500kg 29,762 lb	14,300kg 31,526 lb	15,500kg 34,171 lb	12,500kg 27,558 lb	13,500kg 29,762 lb	14,300kg 31,526 lb	15,500kg 34,171 lb



TC-26/26L



TC-36/36W

	TC-26 (10"/12")	TC-26 <b>L</b> (10"/12")	TC-36 <b>W</b> (12")	TC-36 (12")
Swing Over Bed	ø500mm <b>ø19.69"</b>		ø690mm <b>ø27.17"</b>	
Swing Over Carriage	ø350mm <b>ø13.78"</b>		ø510mm <b>ø20.08"</b>	
Max. Turning Diameter	ø470mm <b>ø18.5"</b>		ø590mm <b>ø23.23"</b>	
X/Z-axis Travel	250/700mm <b>9.84"/27.56"</b>	250/1,100mm <b>9.84"/43.31"</b>	310/700mm <b>12.2"/27.56"</b>	310/1,250mm <b>12.2"/49.21"</b>
Max. Spindle Power	15kW <b>20HP</b>		26kW <b>35HP</b>	
Spindle Nose	A2-8			
Hole Through (Spindle/draw bar)	ø88/ø78mm <b>ø3.46"/ø3.07"</b>		ø105/ø93mm <b>ø4.13"/ø3.66"</b>	
Spindle Speed (opt.)	10"- 4,000rpm (12"- 2,500rpm)		2,500rpm	
Tail Stock Quill Taper (opt.)	MT-5, Fixed Type (MT-4, Rotary Type)		MT-4, Rotary Type	
Turret Capacity (opt.)	12T (8T)			
Machine Weight	4,400kg <b>9,700 lb</b>	5,500kg <b>12,125 lb</b>	5,450kg <b>12,015 lb</b>	7,000kg <b>15,432 lb</b>

1. The manufacturer reserves the right to modify the design, specifications, mechanisms, etc. to improve the performance of the machine without notice. All the specifications shown above are just for reference.  
2. The appearance of the machines will be diverse due to different model and selectivity of accessories.

# CNC Lathe

• GT Series



**GT-200A/B/MA**



**GT-250A/MA/B/MB**



**GT-300 A/LA/MA/LMA/B/LB/MB/LMB**



**GT-380A/B/LA/LB**

	GT-200A	GT-200MA	GT-200B	GT-250A	GT-250MA	GT-250B	GT-250MB
Chuck Diameter	6"			8"		10"	
Swing Over Bed	ø500mm ø19.69"			ø550mm ø21.65"			
Swing Over Carriage	ø330mm ø12.99"			ø420mm 16.54"			
Max. Turning Diameter	ø260mm ø10.24"	ø230mm ø9.06"	ø260mm ø10.24"	ø350mm ø13.78"	ø270mm ø10.63"	ø350mm ø13.78"	ø270mm ø10.63"
X/Z-axis Travel	150/360mm 5.91"/14.17"	177/370mm 6.97"/14.57"	150/345mm 5.91"/13.58"	195/560mm 7.68"/22.05"	230/560mm 9.06"/22.05"	195/515mm 7.68"/20.28"	230/530mm 9.06"/20.87"
Max. Spindle Power	11kW 15HP			15kW 20HP			
Spindle Nose	A2-5		A2-6	A2-6		A2-8	
Hole Through (Spindle/draw bar)	ø56/ø45mm ø2.2"/ø1.77"		ø62/ø52mm ø2.44"/ø2.05"	ø62/ø52mm ø2.44"/ø2.05"		ø88/ø75mm ø3.46"/ø2.95"	
Spindle Speed	6,000rpm		4,500rpm	4,500rpm		3,500rpm	
Tail Stock Quill Taper (opt.)	MT-4, Fixed Type			MT-5, Fixed Type (MT-4 Rotary Type)			
Turret Capacity	12T VDI 30		10T	12T VDI 40		10T	12T VDI 40
VDI Live Tool Motor	—	3.7kW4.96HP	—	—	5.5kW7.38HP	—	5.5kW7.38HP
VDI Live Tool Speed	—	4,500rpm	—	—	3,000rpm	—	3,000rpm
Machine Weight	4,210kg 9 281 lb	4,260kg 9 392 lb	4,210kg 9 281 lb	6,000kg 13,228 lb		6,200kg 13,669 lb	

1. The manufacturer reserves the right to modify the design, specifications, mechanisms, etc. to improve the performance of the machine without notice. All the specifications shown above are just for reference.  
2. The appearance of the machines will be diverse due to different model and selectivity of accessories.



	GT-300A	GT-300LA	GT-300MA	GT-300LMA
Chuck Diameter	10"			
Swing Over Bed	ø600mm ø23.62"			
Swing Over Carriage	ø450mm ø17.72"			
Max. Turning Diameter	ø440mm ø17.32"		ø360mm ø14.17"	
X/Z-axis Travel	245/712mm 9.65"/28.03"	245/1,262mm 9.65"/49.69"	275/742mm 10.83"/29.21"	275/1,292mm 10.83"/50.87"
Max. Spindle Power	18.5kW 25HP			
Spindle Nose	A2-8			
Hole Through (Spindle/draw bar)	ø88/ø75mm ø3.46"/ø2.95"			
Spindle Speed	3,500rpm			
Tail Stock Quill Taper (opt.)	MT-5, Fixed Type (MT-4 Rotary Type)			
Turret Capacity	10T		12T with VDI 40	
VDI Live Tool Motor	—		5.5kW 7.38HP	
VDI Live Tool Speed	—		3,000rpm	
Machine Weight	6,950kg 15,322 lb	7,850kg 17,306 lb	6,950kg 15,322 lb	7,850kg 17,306 lb

	GT-300B	GT-300LB	GT-300MB	GT-300LMB
Chuck Diameter	12"			
Swing Over Bed	ø600mm ø23.62"			
Swing Over Carriage	ø450mm ø17.72"			
Max. Turning Diameter	ø440mm ø17.32"		ø360mm ø14.17"	
X/Z-axis Travel	245/700mm 9.65"/27.56"	245/1,250mm 9.65"/49.21"	275/733mm 10.83"/28.86"	275/1,283mm 10.83"/50.51"
Max. Spindle Power	18.5kW 25HP			
Spindle Nose	A2-8			
Hole Through (Spindle/draw bar)	ø105/ø91mm ø4.13"/ø3.58"			
Spindle Speed	3,000rpm			
Tail Stock Quill Taper (opt.)	MT-5, Fixed Type (MT-4 Rotary Type)			
Turret Capacity	8T		12T with VDI 40	
VDI Live Tool Motor	—		5.5kW 7.38HP	
VDI Live Tool Speed	—		3,000rpm	
Machine Weight	6,950kg 15,322 lb	7,850kg 17,306 lb	6,950kg 15,322 lb	7,850kg 17,306 lb

	GT-380A	GT-380B	GT-380LA	GT-380LB
Chuck Diameter	12"	15"	12"	15"
Swing Over Bed	ø700mm ø27.56"			
Swing Over Carriage	ø570mm ø22.44"			
Max. Turning Diameter	ø560mm ø22.05"			
X/Z-axis Travel	305/715mm 12.01"/28.15"	305/680mm 12.01"/26.77"	305/1,265mm 12.01"/49.8"	305/1,230mm 12.01"/48.43"
Max. Spindle Power	18.5kW 25HP			
Spindle Nose	A2-8			
Hole Through (Spindle/draw bar)	ø105/ø91mm ø4.13"/ø3.58"			
Spindle Speed	3,000rpm	2,000rpm	3,000rpm	2,000rpm
Tail Stock Quill Taper (opt.)	MT-5, Fixed Type (MT-4 Rotary Type)			
Turret Capacity	10T			
Machine Weight (approx.)	7,520kg 16,579 lb	7,570kg 16,689 lb	7,980kg 17,593 lb	8,030kg 17,703 lb

1. The manufacturer reserves the right to modify the design, specifications, mechanisms, etc. to improve the performance of the machine without notice. All the specifications shown above are just for reference.  
2. The appearance of the machines will be diverse due to different model and selectivity of accessories.

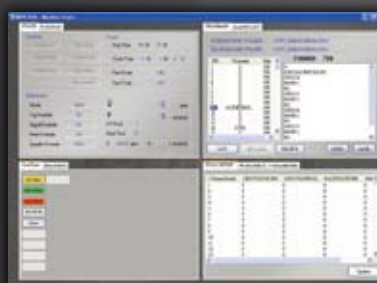
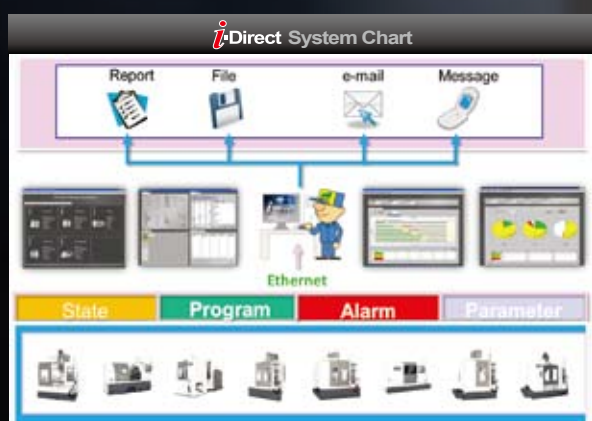
# MXP-200 FB/FC

**YCM CONTROL**  
by **FANUC**

- High Response AC Digital Servo & Spindle Drives with High Definition
- AICC II High Speed High Accuracy with Auto Switching on/off Machining
- JERK Control Function (opt.)
- High Rigidity Tapping, Helical Interpolation
- Custom Marco B and Tool Path Graphics
- Manual Guide i with large Screen Display . (MXP-200FC, opt.)
- Program File Management for Easy Program Classifying
- USB Interface for Easy Parameters & CNC Programs Transfer
- 512KB Memory
- High Speed Positioning Function (MXP-200FC, opt.)
- Memory Card Program Edit & Operation (opt.)
- 3D Interference Check (5-axis control as standard)
- NANO Smoothing Function (opt.)
- 400 pairs tool offset, 1,000 total registered programs
- 48 pairs of workpieces coordinate system
- Extended parts program editing (cut, copy, and paste. maximum 4,000 characters)

**i-Direct** A remote monitoring system

The YCM Production Line Monitoring System i-Direct overcomes the limitations of time and distance. This software provides plant operators with instant production status, including production value, output, standby, alarm time, status display and malfunction records of the machine. These data could be browsed online and printed. When incidents occur, i-Direct will automatically warn plant operators through e-mail or MMS message. With i-Direct Production Line Monitoring System the plant operators can easily keep track of production statuses regardless of time and distance.



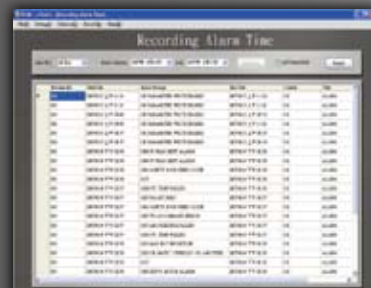
Single Machine Status Browsing Single Machine Status Browsing



Plant Operation Status Monitoring



Machine connection, MMS and e-mail settings



Machine Status Time Record



Production Status Process Record



Production Management Statistics



# i-OPERATION *Plus II*

Software Enhancement Exclusively from YCM



## Pre-machining Preparation

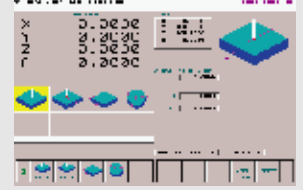
**Intelligent Tool Data Management**  
Comprehensive tool data management function allows operators to monitor and manage all positions in tool magazine



**Tool Length Measurement**  
Graphic measuring interface provides automatic tool length measurement function



**Workpiece Coordinate Calculation**  
Conversational operating window provides convenient and fast setup of workpiece coordinates



## RENISHAW GUI System (Conversational Graphic Operating Interface)

Tool measurement & measurement correction



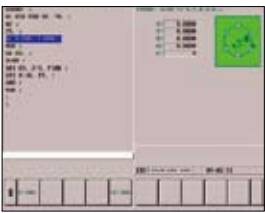
Workpiece measurement



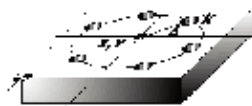
## Programming



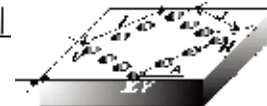
### I\_PATTERN



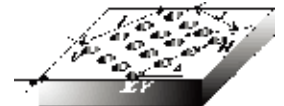
15 sets of machining cycle program  
Reduces program input and memory time  
Graphic interface & conversational command input



CIRCULAR HOLE PATTERN  
(G120 P1) Function



RECTANGULAR HOLE PATTERN  
(G120 P4) Function

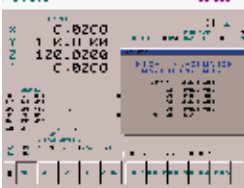


GRID HOLE PATTERN  
(G120 P5) Function

## Machining

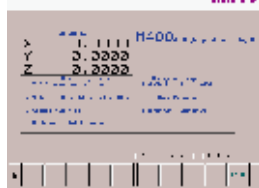
### High Performance Machining Mode M300

With 5 sets of parameter settings, the users choose the most suitable mode for optimum machining



### High Speed Machining Mode M400

Increases drilling and tapping speed, reduces machining time for job shop and precision mold machining



### Tool Load Management

Instant tool load monitoring with alarm function



### Multi-display Function

Displays 4 statuses simultaneously with configurable status display



### Tool Life Management

Indicates tool status of each group with tool life alert



## Instant Message Alert

### Pop-up Alarm Display

Instantly provides troubleshooting procedure  
Quick response to alarm



### Wireless Message Notification

Machine status sent to a designated cellphone number.



## Maintenance

### Intelligent Maintenance



Provide users with periodic maintenance options and descriptions

Instantly provide users with maintenance notifications

### Counter Function



Allow users to keep count of workpieces with the function of overtime cycle alarm provides easy control over machining cycle time

1. Main Counter
2. Periodical Counter
3. Daily Counter
4. Over Cycle Alarm

# ISOLATED DIRECT DRIVE SPINDLE

## IDD PLUS

### Features

- **Automatic Spindle Cooling System**  
Effectively dissipates heat generated from long runtime through efficient oil cooled circulation.
- **Micro Oil-air Lubrication System**  
Consistently injects micro amount of lubricant to spindle bearings for maximizing spindle life.
- **Highly Reliable Helical Disc Spring Design**  
Ensures optimal spindle balance.
- **Floating Cylinder Design of Tool Clamp/Unclamp System**  
Eliminates unnecessary force on spindle bearings.
- **Perpetual Pre-load Design**  
Reduces the effect of spindle thermal growth under long spindle runtime.



- ▲ **IDD: 10,000rpm/12,000rpm/15,000rpm**  
**IDD PLUS: 16,000rpm**  
Spindle thermal growth is minimized with effective isolation of the heat generated by spindle motor from the spindle cartridge.

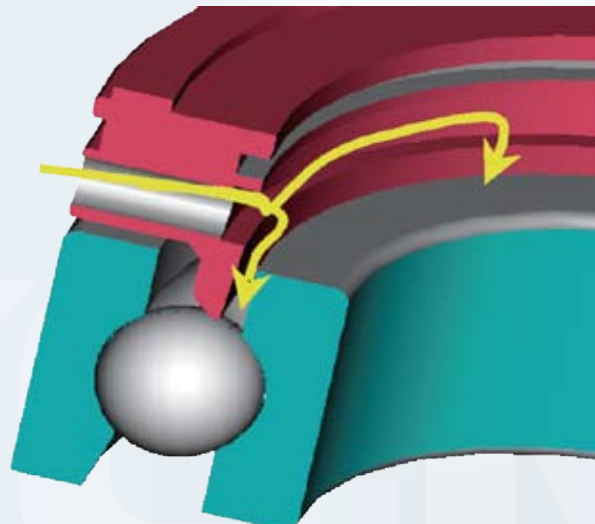
## YCM Spindle Features

- **Micro Oil-air Lubrication System with Hi-lub Technology**  
Directly injects micro amount of lubricant to each spindle bearing. Consistent lubrication prolongs spindle life.

Normal Lube: 0.03~0.1cc/5~8min.

The hi-lub technology is 2.5 times more effective than normal lubrication system.

**2.5** <sup>Enhanced</sup> **times**





# BUILT-IN MOTORIZED SPINDLE

## Integral Spindle Motor

Features

### Double Contact Spindle Taper

Ensures heavy-duty cutting performance and machining accuracy.

### Highly Reliable Helical Disc Spring Design

For better spindle balance and life.

### Rear Bearing Floating Design

Decreases thermal deformation at high speed.

### Design for Dynamic Balance of Spindle

Provides ultimate cutting rigidity.

### Micro Oil-air Lubrication System

Minimizes thermal deformation and prolongs spindle life.

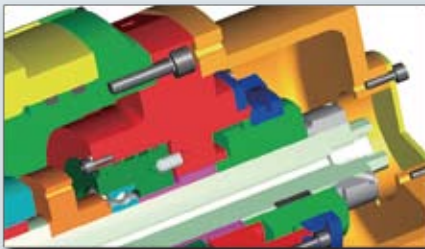
### Integral Spindle Motor

40 Taper: 20,000rpm

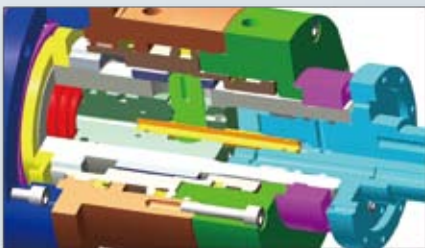
30 Taper: 30,000rpm

### YCM integral spindle motor design reduces centrifugal force effect and results in low spindle vibration.

The spindle vibration is consistently controlled under 0.4G (ISO 1940), 5 times better than normal belt type spindle design.



### Perpetual pre-load design reduces thermal deformation under long runtime.



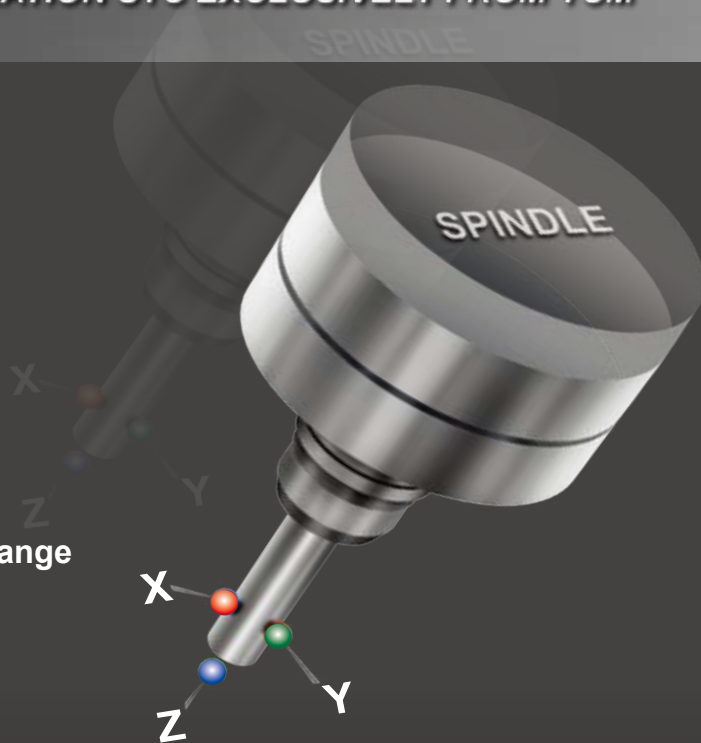
### Floating cylinder design of tool clamp/unclamp system eliminates unnecessary force on the spindle bearings during tool change and prolongs spindle bearing life.

# YCM SPINDLE THERMAL COMPENSATION

THE NEXT GENERATION STC EXCLUSIVELY FROM YCM

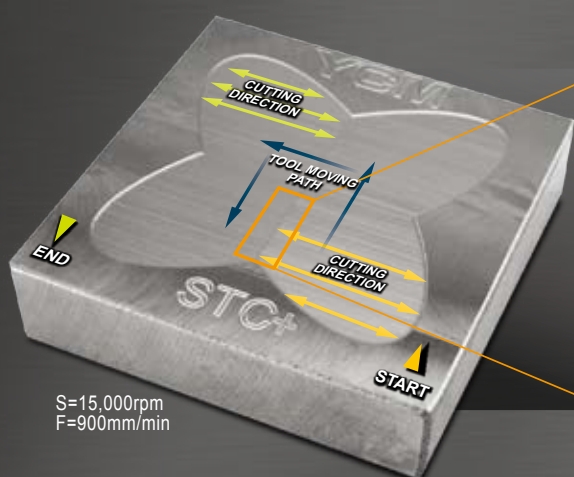
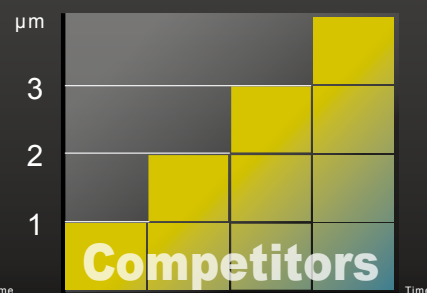
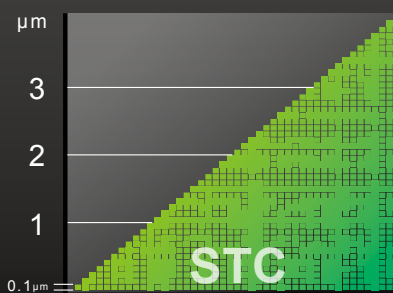
## STC

- Resolution Improved, Reaching 0.1μm
- Reduce Machine Warm-Up Time
- Works in Non-Air Conditioning Environment
- Provides Total Compensation at Full Speed Range

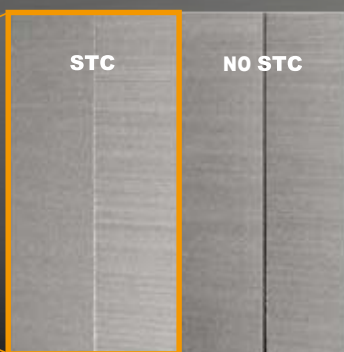


## x10

High Resolution



S=15,000rpm  
F=900mm/min



**Model: NDV102A**  
**15,000rpm**

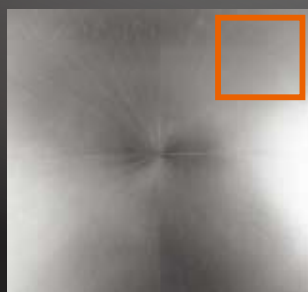
Material: NAK-80 (HRC40°)

Size: 50 x 50 x 13mm

Tool: R0.5 ø1 Ball End Mill

Time: About 105 Min

Compensation Range: 20-100% of Max. Spindle Speed  
(Other brand 50-100%)



**STC**  
**YCM**



**Competitors**

**Model: NDV102A**  
**15,000rpm**

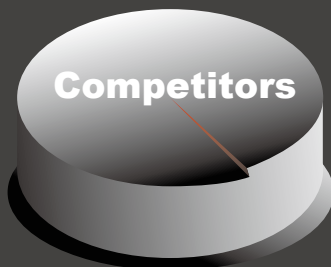
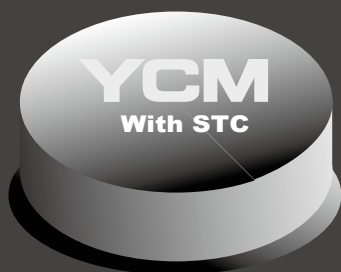
Material: Aluminum

Size: 150 x 150mm

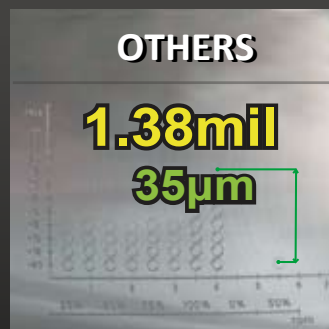
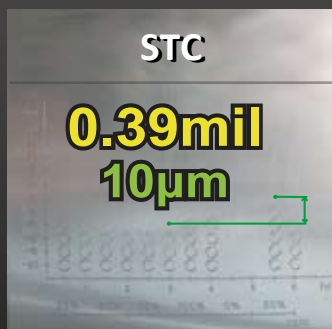
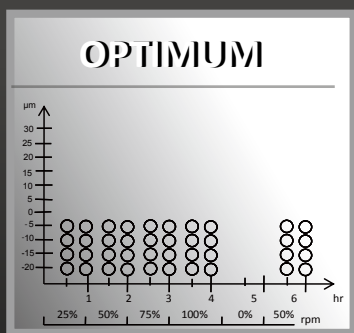
Tool: R3 ø6 Ball End Mill

Time: About 150 Min





**Model: NDV85A 20,000rpm**



Material: Aluminum

Size: 80 x 80 x 25mm

3.15 x 3.15 x 0.98"

Tool: R1 Ball End Mill

Time: 6 Hours

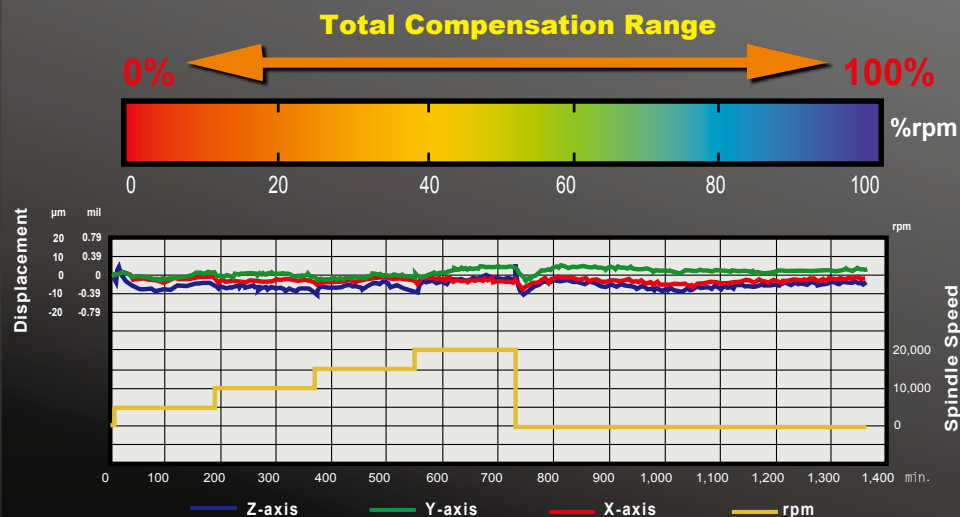
NOTE: The test data in this brochure is provided as an example under specific guidelines.

Results may be different due to variation in machine settings or environmental conditions during machining and measuring.

## STC Advantages Upgraded

Provides Total Compensation from 0 to 100% rpm

Continuously Works in Downtime



**Model: NDV85A**  
**20,000rpm**

Working Table: 1,000x650mm

Spindle Taper: BBT40

X-axis Travel: 850mm

Y-axis Travel: 600mm

Z-axis Travel: 600mm

## VMC

### Vertical Machining Center

**FP Series** High Precision High Performance Die Mold Vertical Machining Center  
/ High Precision Graphite Vertical Machining Center  
FP55LX, FP66A, FP100A / FP66G

**NXV Series** High Performance Vertical Machining Center  
NXV1020A/AM

**TV Series** Heavy Duty Vertical Machining Center  
TV116B, TV146A/B, TV158B, TV188B, TV2110B, TV2610B

**NTV Series** High Efficiency T-base Vertical Machining Center  
NTV158A/B

**NMV Series** High Performance High Rigidity Vertical Machining Center  
NMV106A

**WV Series** Ultra Wide High Performance Vertical Machining Center  
WV108A/B

**FX Series** High Performance 5-axis Vertical Machining Center  
FX380A

**NSV Series** Ultra High Performance Vertical Machining Center  
NSV66A, NSV85A, NSV102A, NSV156A

**NDV Series** High Precision Die Mold Vertical Machining Center  
NDV66A, NDV85A, NDV102A

**TCV Series** High Performance Traveling Column Vertical Machining Center  
TCV2000A, TCV3000A, TCV3000A-5AF, TCV3000A-5AX

**DCV Series** Advanced Double Column Vertical Machining Center

DCV2012A/B, DCV3016B, DCV4016B, DCV3021B, DCV4021B, DCV5021B, DCV6021B, DCV3025B, DCV4025B, DCV5025B, DCV4030B, DCV5030B, DCV6030B, DCV4035B, DCV5035B, DCV6035B, DCV4030B-5AX, DCV5030B-5AX, DCV6030B-5AX, DCV4030B-5AF

**NDC Series** High Performance Double Column Vertical Machining Center  
NDC2016B, NDC3016B, NDC4016B

## HMC

### Horizontal Machining Center

**H Series** High Production Horizontal Machining Center  
H500A/B, H630B, H800B, H2612B

**NH Series** High Speed High Precision Horizontal Machining Center  
NH450A, NH630B, NH800B

## HBM

### Horizontal Boring Milling Machining Center

**BMP Series** High Accuracy Heavy Duty Boring Machine  
BMP1416B

## CNC LATHES

### CNC Turning Center

**NT Series** High Performance Mill-axis Mill/Turn Center  
NT-2000Y/SY, NT-2500Y/SY

**GT Series** High Performance Geo Turning Center  
GT-200A/B/MA, GT-250A/B/MA/MB, GT-300A/B/LA/LB/MA/MB/LMA/LMB, GT-380A/B/LA/LB

**TC Series** High Performance High Precision CNC Lathe  
TC-16A/B/LA/LB/MA/MB/LMA/LMB, TC-26, TC-26L, TC-36, TC-36W, TC-46, TC-46M

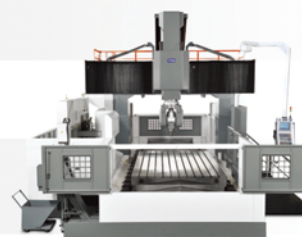
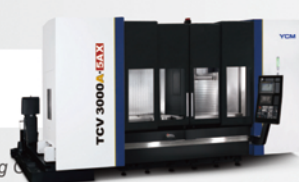
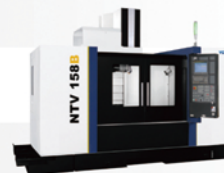
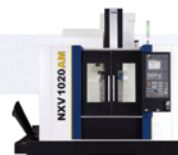
Integrated Operation Control System **iOPERATION**

Spindle Thermal Compensation System **STC PLUS**

Remote Monitoring System **i-Direct**

Automation Solutions

INTEGRATION  
AND SOLUTIONS



**YEONG CHIN MACHINERY INDUSTRIES CO., LTD.**

No. 888, Sec. 1, Homu Road, Shengang District, Taichung 42953, Taiwan

Tel : +886-4-2562-3211 ■ Fax: +886-4-2562-6479

Web Page: [www.YCMCNC.com](http://www.YCMCNC.com) ■ Email: [sales@YCMCNC.com](mailto:sales@YCMCNC.com)

