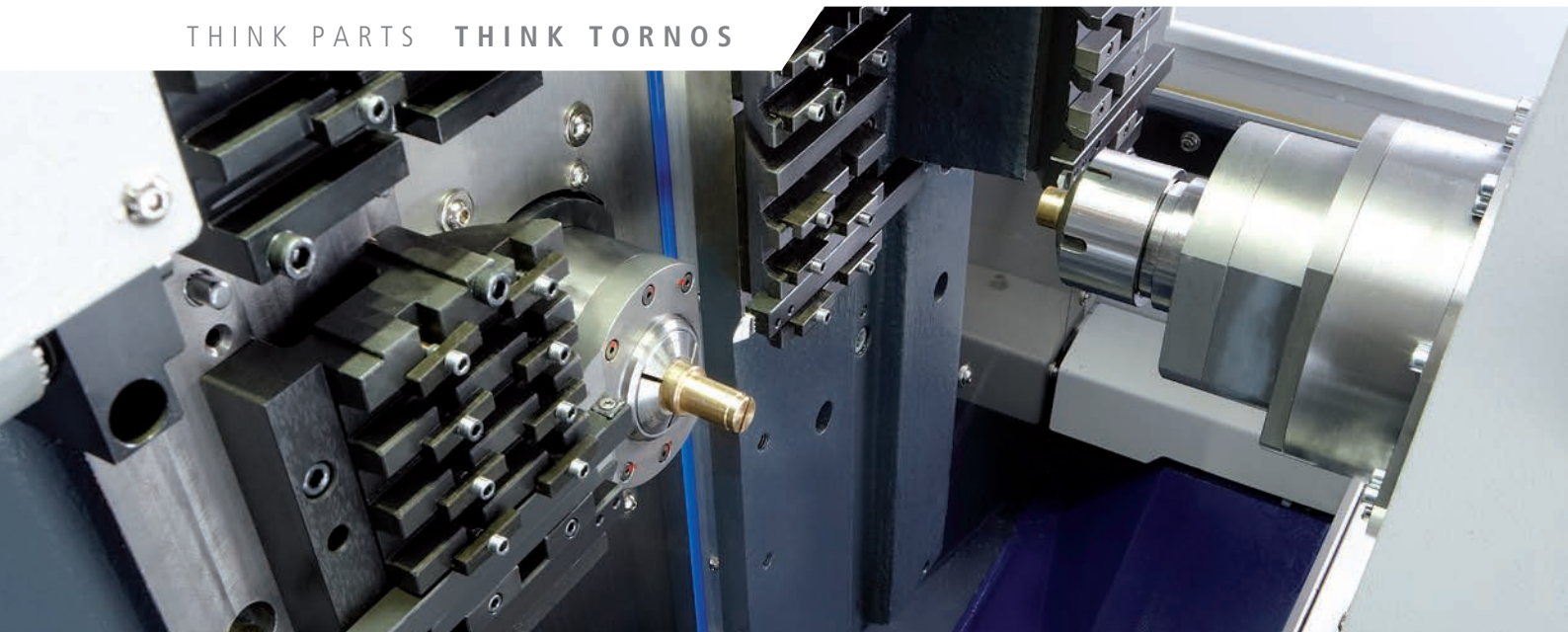




SWISS TYPE LATHES

THINK PARTS **THINK TORNOS**



SWISS ST 26

High Performance Swiss Type Lathe

# TORNOS PROVIDES SOLUTIONS TO HIGH-TECH INDUSTRIES SPECIALISING IN THE FOLLOWING SECTORS

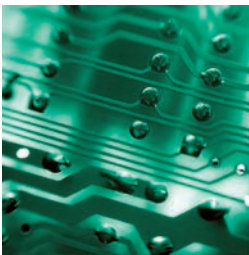
## AUTOMOTIVE



## MEDICAL



## ELECTRONICS



## MICROMECHANICS



# SWISS ST 26 IN A FEW WORDS

High performance Swiss type lathe



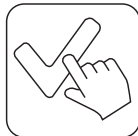
## Productivity

- Up to 3 tools cutting simultaneously.
- The most dynamic spindles in its class.
- Balanced turning and milling operations are possible.



## Performance

- Up to 25,4 mm capacity (with bar prep).
- The most powerful spindles in its class.
- Designed to work with or without guide bush.
- Unique modular tooling system.
- Up to 37 tools.



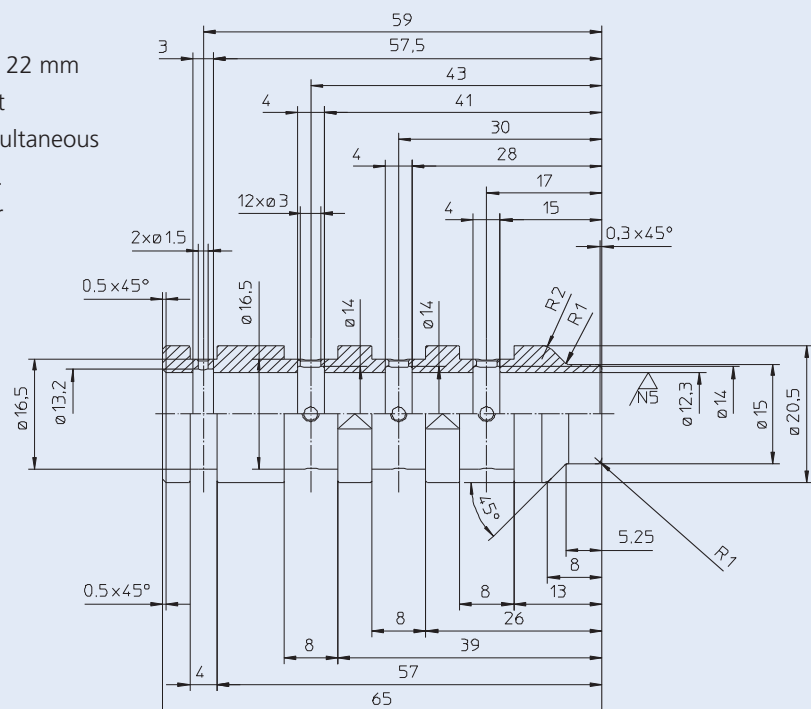
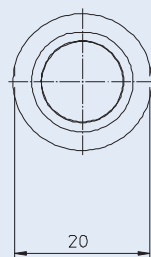
## Accessibility

- Large work zone allowing easy access to the tools from both sides of the machine.
- Ergonomics designed with the operator in mind.
- Open design for excellent chip evacuation into the large chip container.

## Machining example Swiss ST 26



Material: Al Eco62Sn 9 Ø 22 mm  
 Production: 43,2 sec/part  
 Double slide allowing simultaneous drilling in main operation.  
 Face burnished in counter operations.



# SWISS ST 26

High performance Swiss type lathe with modular tooling concept



## Performance

- 23 mm capacity, up to 25,4 mm with bar end preparation.
- Up to 37tools.
- Up to 20 rotating tools.
- Possible to work with or without guide bush.
- The 2 independant platens add flexibility and machinability for operations such as milling, slotting or balanced turning.
- The most powerful and dynamic main spindle and counter spindle in its class.
- Wide selection of attachments and accessories.

## Productivity

- 2 completely independent tool systems allows optimisation of machining in main operations.
- 7 linear axes and 2 C axes.
- Highly dynamic spindles: 0 to 10 000 rpm in only 0,9 seconds.

## SWISS ST 26



### Accessibility

- Large machining area accessible from both sides of the machine.
- Ergonomic design.
- Control panel is mounted on a swivelling arm for easy access.
- Unique modular tooling system.

### Autonomy

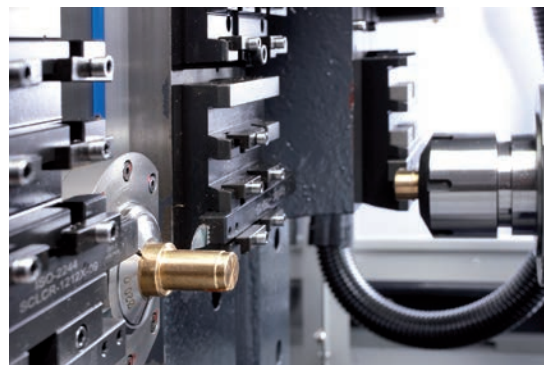
- Open design for excellent chip evacuation.
- Large coolant tank.
- Large chip container allowing for extended running.
- Automatic central lubricating system.

# SWISS ST 26

## DELIVERING HIGH TECHNOLOGY

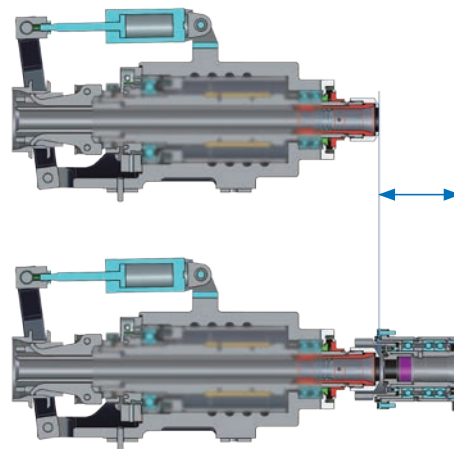
### New motor spindle technology

- 100% Swiss design and manufacture by Tornos in Moutier, Switzerland.
- Identical main spindle and counter spindle with high performance synchronous motors.
- Heat exchanger keeps the spindles thermally stable assuring high precision.
- Powered spindles offer high output and high torque.
- Reduction in idle time (stopping, indexing, acceleration, deceleration), from 0 to 10000 rpm in 0,9 sec.
- Reduced noise and maintenance.
- Best power in its class.



### Working with or without a guide bush

- Possible to switch between the guide-bush type and guide-bushless type, the most suitable system for the part can be chosen.
- Quick change over in less than 30 min.
- Lower quality bar material required and shorter bar end (short bar remnant).



### «Done in one»

Finish the part! This has been the challenge for Tornos engineers since the company was founded.

We have constantly introduced innovative machining solutions in order to avoid secondary operations.

For example :

- Internal and external thread whirling
- Gear hobbing
- Torx milling
- Deep boring
- Angled milling for main operations and counter operations
- Thread cutting
- Thread rolling
- Stamping
- Roller burnishing
- Micro milling with high frequency spindles



# SWISS ST 26

## EXTREME MACHINING CAPABILITIES

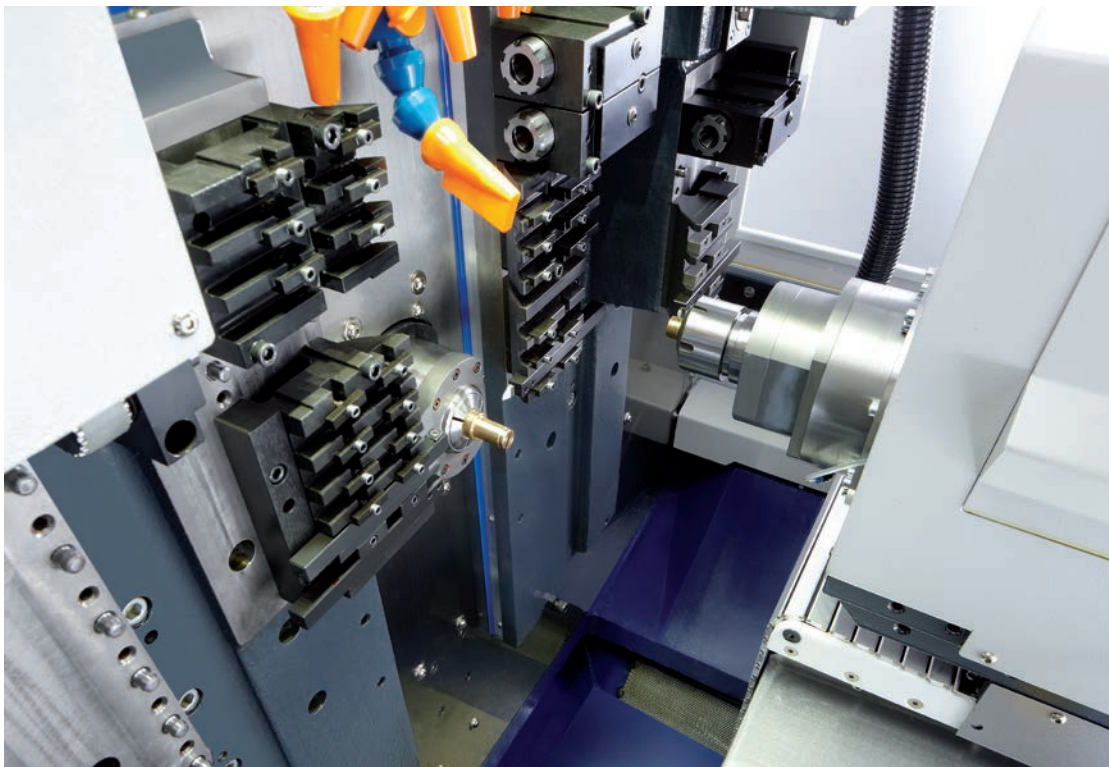
### **Ergonomics**

The wide machining area enables the operator to access the tools easily for short setup times. User friendly thanks to the latest Fanuc control, embedded in an ergonomic panel, and mounted on a swivelling arm that can be accessed from both sides of the machine.



### **Un-manned operation**

To improve the machine's profitability, the Swiss ST 26 has been designed to run unattended for long periods of time with no human intervention.

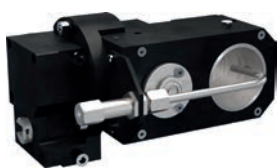


# MODULAR TOOLING CONCEPT

## Swiss ST 26 is available in 3 packages all feature:

- Unique modular tooling arrangements allow machine to accommodate value added operations like polygon turning, thread whirling, deep drilling, etc.
- 7 axes with 2 independent tool platens, 37 tool positions.
- Up to 20 positions can accept rotating tools.
- Every Swiss ST package includes the C axis in main (C1) and counter operations (C4).

- Tool platen 1
- Tool platen 2
- Counter operations
- Counter spindle



■  
Thread whirling unit  
max. 5700 min<sup>-1</sup>  
angle +/- 15°  
Ø max. 10 mm



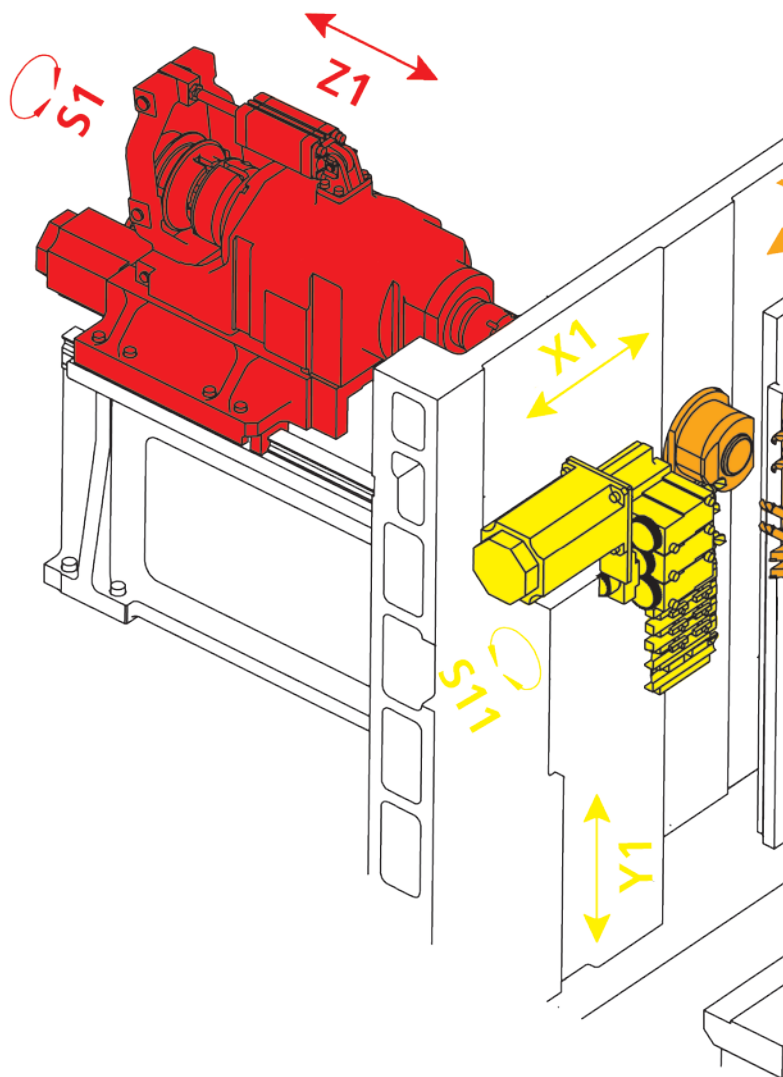
■  
Polygon milling unit  
max. 6000 min<sup>-1</sup>  
polygon tool Ø 80 mm



■ ■ ■  
Tool holder for 3 turning tools  
for counter operation



■ ■ ■  
Tool holder for 2 turning tools





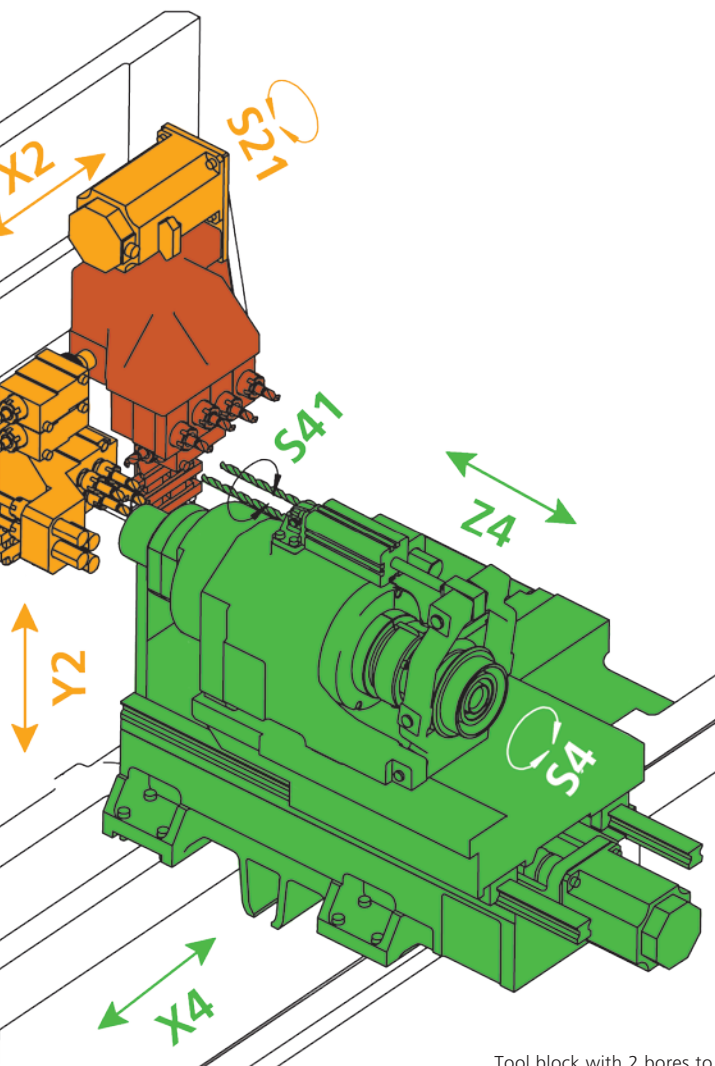
# THE GUARANTEE OF HIGH FLEXIBILITY



■ ■ ■ ■ ■  
Tool holder for 5 turning tools



■ ■  
Tool holder with 2 end working positions



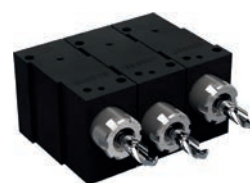
■ ■ ■ ■  
Drill/milling attachment with ESX 20 collet (6 mm offset)



■ ■ ■ ■  
Drill/milling attachment with spindle for ESX 20 (15 mm offset)



■ ■ ■  
Milling attachment (63 mm saw)



■ ■ ■ ■  
Base with 3 bores to accept steady holders for work in counter operations



■ ■  
Offset tool block with 8 bores to accept holders for work in main (4x) and counter operations (8x).

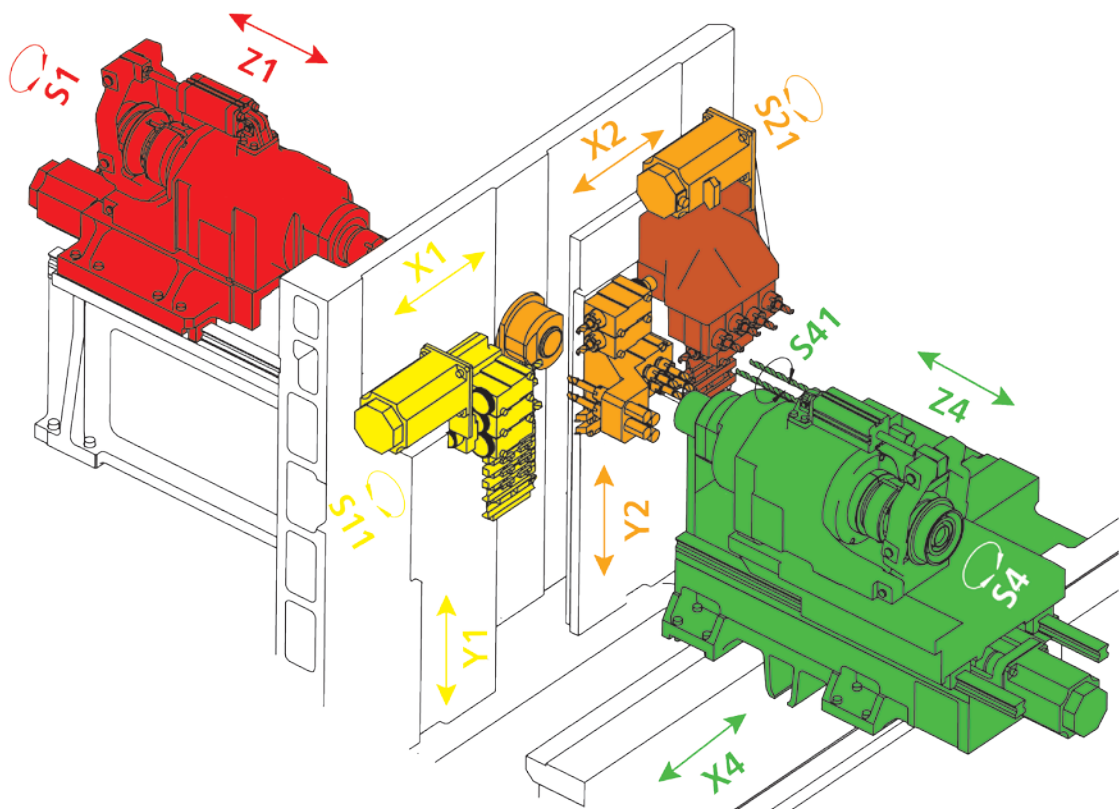
Tool block with 2 bores to accept drill holders for deep drilling. Mounts on the left side of the counter spindle. Maximum drilling length: 160 mm. Fitted with connection for high pressure coolant.



# SWISS ST 26

Swiss type lathe with 7 linear axes

Z1	C1	S1		
Sliding headstock	Sliding headstock C axis	Main spindle		
X1 / Y1			S11	
Platen 1			Rotating spindle on guide bush	
X2 / Y2			S21	
Platen 2			Rotating spindle on guide bush	
X4 / Z4	C4	S21	S4	S41
Counter spindle	Counter spindle C axis	Rotating spindle on counter operations	Counter spindle	Rotating spindle on the counter spindle slide



# SWISS ST 26

## TECHNICAL SPECIFICATIONS

## SWISS ST 26

7 linear axes + 2 C axes  
2 independent tool systems

### Main Spindle (headstock) (Z1/S1/C1)

Maximum bar capacity	mm	23 (25,4)
Standard part length with a rotating guide bushing	mm	220
Max. rpm of the spindle	rpm	10 000
Spindle output	kW	9,5 (11)
Max constant torque	Nm	17
Spindle stop or start time from 0 to 10 000 rpm	sec	0,9
Drilling capacity in free machining steel	mm	10
Tapping capacity in free machining steel		M10

### Tool platen (X1/Y1/S2) (X2/Y2)

Number of tool positions in main operations		18
Cross section of the turning tools		12 x 12 mm or ½ x ½
Number of positions for rotating tools		8
Max rpm of the rotating tools	rpm	6 000
Output of the rotating tools	kW	0,75
Drilling capacity in free machining steel	mm	8
Tapping capacity in free machining steel		M6

### Counter spindle (X4/Z4/S4/C4)

Maximum bar capacity	mm	23 (25,4)
Max. rpm of the spindle	t / min	0 to 10 000
Spindle output	kW	9,5 (11)
Max constant torque	Nm	17
Spindle stop or start time from 0 to 10 000 rpm	sec	0,9
Drilling capacity in free machining steel	mm	10
Tapping capacity in free machining steel		M10
Maximum number of tools		37
Breakdown of tools between main and counter operations		20 / 17
Type of control		Fanuc 31i-B
Feedback of the motor-encoder axes		Absolute pulse encoders
Type of motors (axes and spindles)		synchronous (AC)
Resolution of the axes	µm	0,1

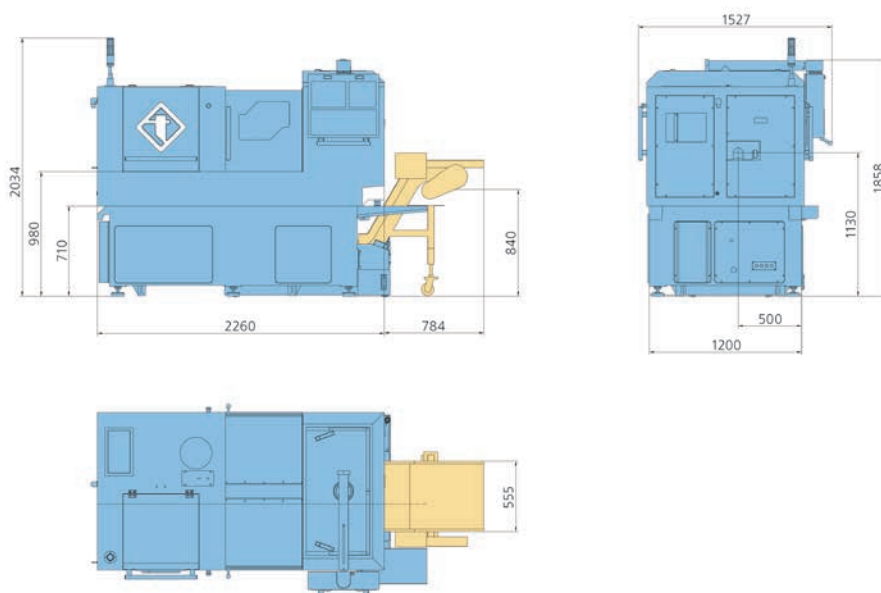
## NC SPECIFICATIONS

Item	Description
NC unit	Fanuc 31i-B
Controllable axes	X1, Z1, Y1, X2, Y2, C1, X4 (XB), Z4, C4
Least input increment	0,0001 mm
Interpolation method	Linear / circular
Rapid traverse rate	35 m / min Y1, Y2; 30 m / min Z1, X4, Z4; 20 m / min X1, X2
Cutting feed rate	1 to 6,000 mm / min
Feed rate override	0 to 150%, 10% step
No. of tool offsets	100
LCD/MDI	10,4" Color LCD
Part program storage size	1 Mb

# SWISS ST 26

## GENERAL SPECIFICATIONS

Max. length	mm	2300
Max. width	mm	1300
Height	mm	1700
Weight	kg	3300
Coolant tank capacity	l	185
Power of the coolant pump	W	400
Max. pressure	bars	3
Max output of the coolant pump	l / min	80
Colours : RAL 9006 grey, RAL 9011 black		



## BASE MACHINE EQUIPMENT

Rotating guide bushing	x
S1 motorisation for rotating tools on the front tool platen	x
S2 motorisation for rotating tools on the rear tool platen	x
S4 motorisation for the rotating tools in counter operations	x
Axes C1 + C4	x
Interpolation by polar coordinates	x
Pneumatic part ejector + cleaning of the counter spindle collet with coolant	x
Central lubrication system	x
3 colors light tower	x
Coolant pump with self cleaning filter	x
High pressure pump, 20 bars – 20 l / min	x
High pressure pump, 60 bars – 20 l / min	option
Timer to pre-heat the coolant	option
Interface for a fire-fighting device	x

## MAIN STANDARD NC FUNCTIONS

Ethernet
USB
Rigid tapping
Constant surface speed control
Spindle synchronous control
Direct drawing dimension (DDD)
Custom macro
Chamfering/corner R
Inch/metric conversion
Multiple repetitive cycles
Tool radius – Tool nose radius compensation
Tool geometry / wear compensation
Background editing
Manual handle retrace
Canned cycle drilling
Run time/parts number display

# WHICHEVER SWISS ST YOU CHOOSE : YOU ALWAYS CHOOSE SWISS MADE QUALITY

## STARTER PACK



### Main operation

- Tool holder for 5 turning tools
- Tool holder for 3 turning tools
- Offset tool block with 8 bores to accept holders for work in main (4x) and counter operations (8x)
- 3 drill/milling attachments with ESX 20 collet
- Tool block with 2 bores to accept drill holders for deep drilling; mounts on the left side of the counter spindle

### Counter operation

- Tool holder for 3 turning tools
- 2 tool holders for end working positions with ESX 20 collet

## ADVANCED PACK



### Main operation

- Tool holder for 5 turning tools
- Tool holder for 3 turning tools
- Offset tool block with 8 bores to accept holders for work in main (4x) and counter operations (8x)
- 5 drill/milling attachments with ESX 20 collet
- Tool block with 2 bores to accept drill holders for deep drilling; mounts on the left side of the counter spindle

### Counter operation

- Tool holder for 3 turning tools
- 2 tool holders for end working positions with ESX 20 collets
- 5 drill/milling attachments with ESX 20 collets

## MEDTECH PACK



### Main operation

- Tool holder for 5 turning tools
- Tool holder for 3 turning tools
- Offset tool block with 8 bores to accept holders for work in main (4x) and counter operations (8x)
- 3 drill/milling attachments with ESX 20 collet
- 1 thread whirling unit
- Tool block with 2 bores to accept drill holders for deep drilling; mounts on the left side of the counter spindle

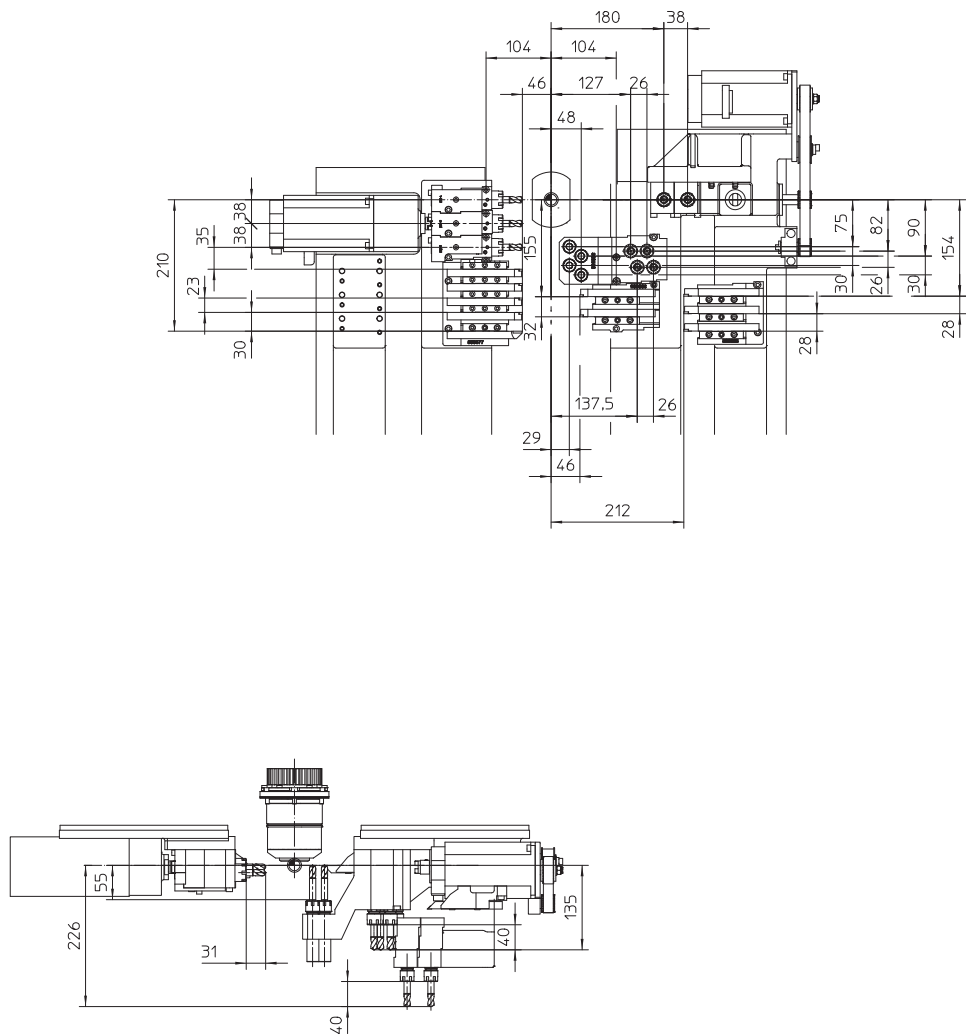
### Counter operation

- Tool holder for 3 turning tools
- 2 tool holders for end working positions with ESX 20 collets
- 5 drill/milling attachments with ESX 20 collets



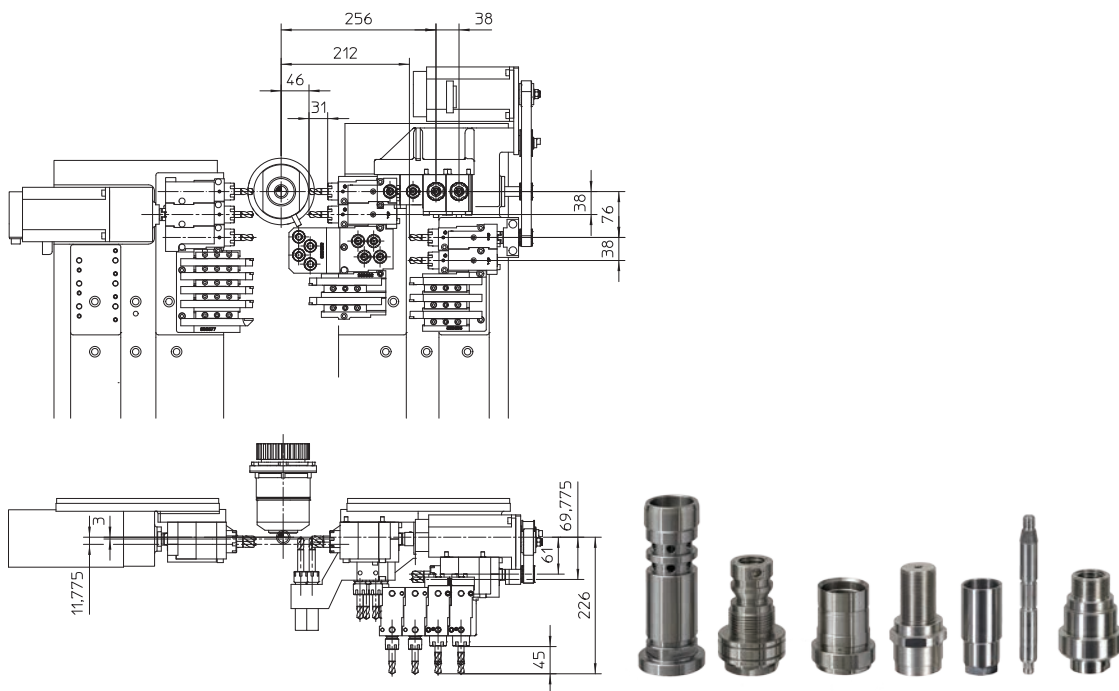
## KINEMATICS

## SWISS ST 26 STARTER PACK

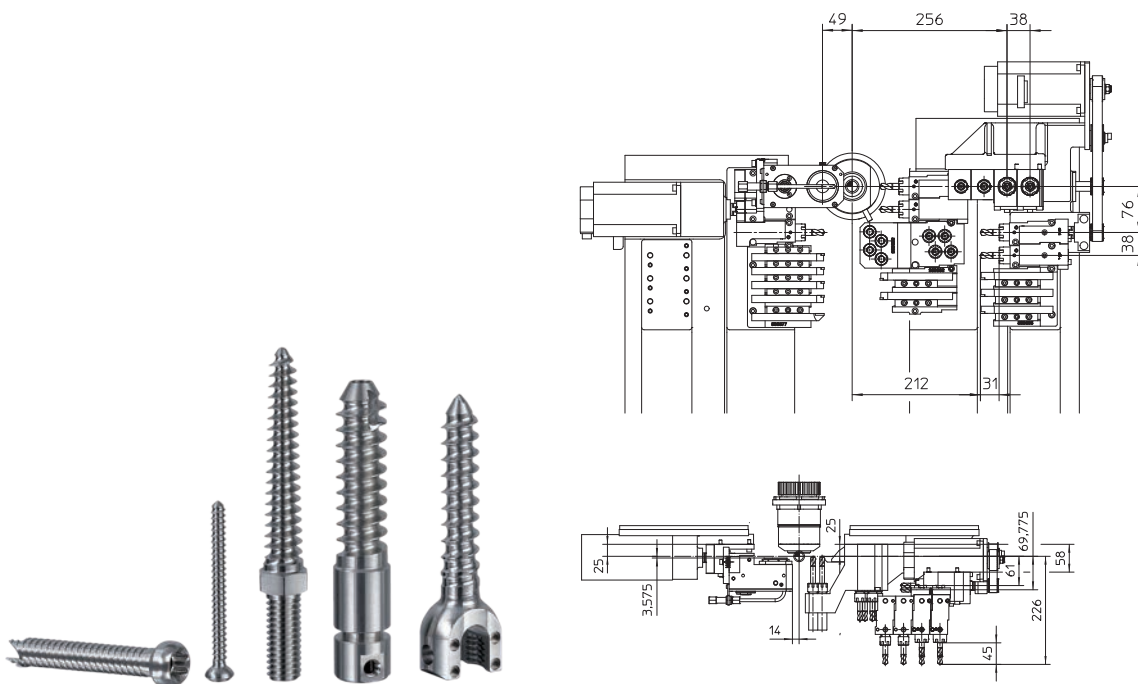


# SWISS ST 26

## SWISS ST 26 ADVANCED PACK



## SWISS ST 26 MEDTECH PACK



**TORNOS S.A.**

Rue Industrielle 111  
CH - 2740 Moutier  
Tél. +41 (0)32 494 44 44  
Fax +41 (0)32 494 49 03  
contact@tornos.com  
www.tornos.com

**TORNOS TECHNOLOGIES**
**DEUTSCHLAND GmbH**

Karlsruher Str. 38  
D - 75179 Pforzheim  
Tél. +49 (0)7231 / 910 70  
Fax +49 (0)7231 / 910 750  
contact@tornos.de

**TORNOS TECHNOLOGIES**
**FRANCE**

Boîte postale 330  
St-Pierre en Faucigny  
F - 74807 La Roche  
s / Foron Cedex  
Tél. +33 (0)4 50 038 333  
Fax +33 (0)4 50 038 907  
france.contact@tornos.com

**TORNOS TECHNOLOGIES**
**IBÉRICA**

Pol. Ind. El Congost  
Avda. St Julià, 206 Nave 8  
E - 08403 Granollers  
Tél. +34 93 846 59 43  
Fax +34 93 849 66 00  
comercial.tti@tornos.com

**TORNOS TECHNOLOGIES**
**ITALIA SRL**

Via Cesare Pavese 21  
I - 20090 Opera / MI  
Tél. +39 02 57 68 15 01  
Fax +39 02 57 68 15 230  
italia.contact@tornos.com

**TORNOS TECHNOLOGIES**
**US CORPORATION**

840 Parkview Boulevard  
US - Lombard, IL 60148  
Tél. +1 630 812 2040  
Fax +1 630 812 2039  
info-us@tornos.com  
www.tornos.us

**TORNOS TECHNOLOGIES**
**UK LTD**

Tornos House  
Whitwick Business Park  
Coalville  
UK - Leicestershire LE67 4JQ  
Tél. +44 (0) 1530 513100  
Fax +44 (0) 1530 814212  
sales@tornos.co.uk

**TORNOS TECHNOLOGIES**
**POLAND Sp. z o.o.**

Ul. Spółdzielcza 37-39  
55-080 Kąty Wrocławskie  
Poland  
Tél. +48 71 33 85 618  
Fax +48 71 33 85 617  
poland.contact@tornos.com

**TORNOS TECHNOLOGIES**
**(Shanghai) LTD**

Hui Feng Creativity Garden  
Feng Yu Building, 1-2F  
No. 239, Xitai Rd, Xu Hui District  
CN - Shanghai 200232  
Tél. +86 21 6235 1235  
Fax +86 21 6235 1938  
china.contact@tornos.com

**TORNOS BEIJING OFFICE**

Rm.1706, Tower A  
Dongyu Office Building  
Jia #1 Shuguang Xili  
Chaoyang District  
CN - Beijing 100028  
Tél. +86 10 5979 8583  
Fax +86 10 5822 0483  
beijing.contact@tornos.com

**TORNOS TECHNOLOGIES**
**ASIA LIMITED**

Rm 1803-06, Corporation Park,  
11 On Lai Street, Shek Mun,  
Shatin, N.T., Hong Kong  
Tél. +852 2691 2633  
Fax +852 2691 2133  
asiapacific.contact@tornos.com

**TORNOS S.A. THAILAND**
**REPRESENTATIVE OFFICE**

7th Floor, 19, Bangna -Trad Soi 34,  
Bangna -Trad KM. 3 Road.  
Bangna, Bangkok, 10260  
Thailand  
Tél. +66 2746 8840-1  
Fax +66 2746 8842  
thailand.contact@tornos.com

**TORNOS TECHNOLOGIES ASIA LTD**
**MALAYSIA**
**REPRESENTATIVE OFFICE**

No. 1-1-11, Ground Floor & 1-2-11,  
First Floor, One Terrace Plus,  
Tingkat Mahsuri 4,  
11900 Bayan Lepas,  
PENANG, MALAYSIA  
Tél. +60 4 642 6562 / 4 642 6563  
Fax +60 4 642 6561  
malaysia.contact@tornos.com