



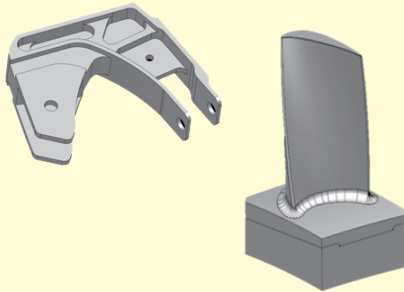
# NFX 380A

High Performance 5-Axis Vertical Machining Center

- ▶ Aerospace / Medical / Automotive / Motorcycle

## Display Feature

- ◎ 5-axis multi-face machining process to ensure accuracy
  - a. Dimension accuracy  $\pm 0.01$  mm
  - b. Position 0.02 mm
- ◎ Blade surface profile 0.05 mm



### SPINDLE

Spindle Speed	12,000 rpm
Max. Spindle Power	17.5 kW 30HP
Spindle Taper	BBT40

### TRAVEL

X / Y / Z-axis Travel	700 / 520 / 480 mm 27.56" / 20.47" / 18.9"
-----------------------	--

### A / C-axis

A / C-axis Rotation Range	+30° ~ -120° / $\pm 360^\circ$
A / C-axis Rotation Speed	33.3 rpm

### TABLE SIZE

Table Size	$\varnothing 380$ mm $\varnothing 14.96$ "
Max. Load on Table	200 kg 441 lb

### FEEDRATE

Rapid Feedrate (X / Y / Z)	36 / 36 / 24 m/min. 1,417 / 1,417 / 945 ipm
Cutting Feedrate	1~10,000 mm/min. 0.04~394 ipm

### ATC

Tool Magazine Capacity	60 T
Max. Tool Weight	6 kg 13.2 lb
Max. Tool Dimensions (W/O Adjacent Tools)	$\varnothing 76$ X 280 mm ( $\varnothing 125$ x 280 mm) $\varnothing 3$ " x 11.02" ( $\varnothing 4.92$ " x 11.02")

Note : The manufacturer reserves the right to modify the design, specifications, mechanisms, etc. to improve the performance of the machine without notice. All the specifications shown above are just for reference.